

Weekly Covid-19 Data Digest



December 22, 2020

Table of Contents

Local Data	Page 1	IHME Model	Page 26
Rankings/Risk Factors	Page 11	Rt Covid-19	Page 27
CDC Information	Page 12	Healthcare Activity Data	Page 29
DHEC Information	Page 14	Resources	Page 29
US Interventions Model	Page 17		

Data included in this report compiled from publicly available sources. For more information or questions, please contact John Douglas, Chief of Business Development, at john.douglas@caresouth-carolina.com or 843-616-1471.

DHEC Reported Active Cases in Pee Dee by Zip Code (as of 12/19/20 at 11:59PM)

Chesterfield County			
Zip	Town	Cases	Per 1000 Pop
29520	Cheraw	36	2.60
29709	Chesterfield	20	3.28
29718	Jefferson	26	7.17
29101	McBee	12	4.52
29727	Mt. Croghan	10	6.11
29728	Pageland	59	5.85
29584	Patrick	10	3.89
29741	Ruby	7	3.86
Unknown or OOC Zip Code		16	N/A
County Total		196	4.29

Darlington County			
Zip	Town	Cases	Per 1000 Pop
29532	Darlington	212	10.29
29540	Darlington	58	10.23
29550	Hartsville	286	8.63
29069	Lamar	31	6.98
29593	Society Hill	6	3.28
Unknown or OOC Zip Code		24	N/A
County Total		617	9.26

Dillon County			
Zip	Town	Cases	Per 1000 Pop
29536	Dillon	180	10.68
29543	Fork	5	9.80
29547	Hamer	25	8.59
29563	Lake View	26	13.85
29565	Latta	122	17.09
29567	Little Rock	8	20.36
Unknown or OOC Zip Code		52	N/A
County Total		418	13.71

Lee County			
Zip	Town	Cases	Per 1000 Pop
29010	Bishopville	115	9.95
29046	Elliott	0	0.00
29080	Lynchburg	26	8.42
Unknown or OOC Zip Code		5	N/A
County Total		146	8.68

Marlboro County			
Zip	Town	Cases	Per 1000 Pop
29512	Bennettsville	81	4.86
29516	Blenheim	3	4.09
29525	Clio	28	23.03
29570	McColl	19	4.77
29594	Tatum	1	8.26
29596	Wallace	10	3.69
Unknown or OOC Zip Code		12	N/A
County Total		154	5.90

Florence County			
Zip	Town	Cases	Per 1000 Pop
29530	Coward	24	8.93
29541	Effingham	92	9.18
29501	Florence	484	9.90
29505	Florence	255	9.59
29506	Florence	176	8.51
29555	Johnsonville	112	20.06
29560	Lake City	160	11.65
29114	Olanta	20	11.04
29583	Pamplico	50	10.22
29591	Scranton	52	10.47
29161	Timmonsville	113	9.68
Unknown or OOC Zip Code		33	N/A
County Total		1571	11.36

Marion County			
Zip	Town	Cases	Per 1000 Pop
29519	Centenary	9	31.58
29546	Gresham	32	11.45
29571	Marion	164	10.51
29574	Mullins	72	6.19
29581	Nichols	8	1.83
29592	Sellers	0	0.00
Unknown or OOC Zip Code		1	N/A
County Total		286	9.33

	Equal or less cases than previous week
	More cases than previous week

* Notes -- zip codes extend beyond county borders so zip code population totals and county populations will not match.
 "OOO Zip Code" indicates zip code for which post office is physically located in adjacent county.

Counties Ranked by Active Cases Per 1000 Pop.

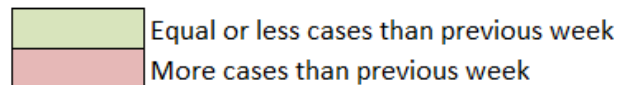
Rank	County	Cases	Per 1000
1	Dillon	418	13.71
2	Florence	1571	11.36
3	Marion	286	9.33
4	Darlington	617	9.26
5	Lee	146	8.68
6	Marlboro	154	5.90
7	Chesterfield	196	4.29

Top Ten Zip Codes by Active Cases Per 1000 Pop.

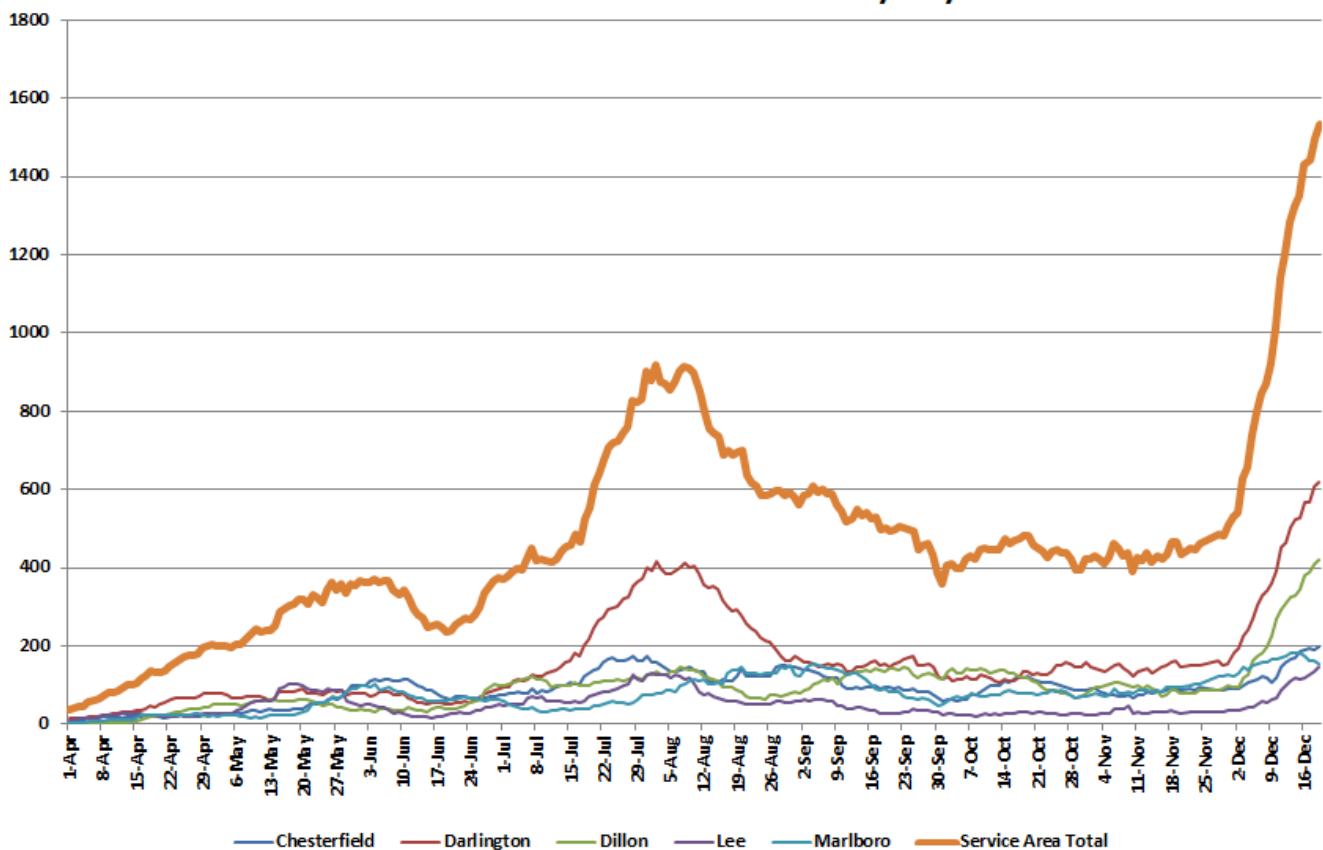
Rank	Town (Zip Code)	Cases	Per 1000
1	Centenary (29519)	9	31.58
2	Clio (29525)	28	23.03
3	Little Rock (29567)	8	20.36
4	Johnsonville (29555)	112	20.06
5	Latta (29565)	122	17.09
6	Lake View (29563)	26	13.85
7	Lake City (29560)	160	11.65
8	Gresham (29546)	32	11.45
9	Olanta (29114)	20	11.04
10	Dillon (29536)	180	10.68

Top Ten Zip Codes by Total Active Cases

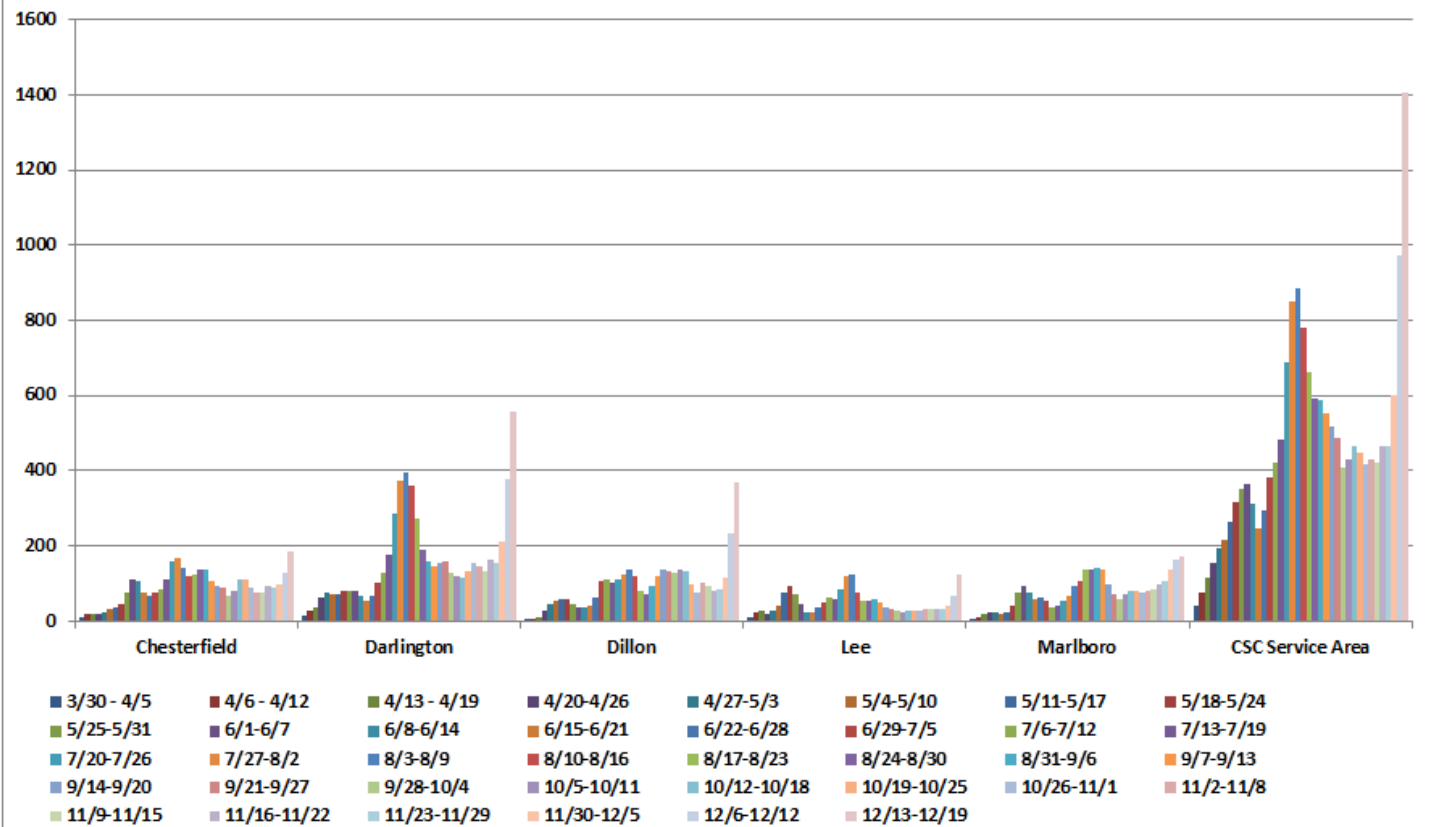
Rank	Town (Zip Code)	Cases	Per 1000
1	Florence (29501)	484	9.90
2	Hartsville (29550)	286	8.63
3	Florence (29505)	255	9.59
4	Darlington (29532)	212	10.29
5	Dillon (29536)	180	10.68
6	Florence (29506)	176	8.51
7	Marion (29571)	164	10.51
8	Lake City (29560)	160	11.65
9	Latta (29565)	122	20.36
10	Bishopville (29010)	115	9.95



Active Cases in CSC Service Area by Day



Active Cases by Weekly Average in CSC Service Area



COVID-19 TOTAL CUMULATIVE CASES COMPARISON DATA (as of December 20, 2020)

Geographic Unit	Population	Cases	Weekly Change	Previous Week Chg.	Cases Per 100 Pop.	Rate Exceeds: State*	Nation	World
Anson County, NC	25,289	1,288	169	99	5.09	Yes	No	Yes
Chesterfield County	45,650	2,121	117	127	4.65	No	No	Yes
Columbus County, NC	56,220	3,268	217	160	5.81	Yes	Yes	Yes
Darlington County	66,618	4,065	428	349	6.10	Yes	Yes	Yes
Dillon County	30,479	2,118	240	204	6.95	Yes	Yes	Yes
Florence County	138,293	9,019	881	844	6.52	Yes	Yes	Yes
Horry County	354,081	18,156	1,122	1,044	5.13	No	No	Yes
Kershaw County	66,551	3,547	223	204	5.33	Yes	No	Yes
Lancaster County	98,012	4,632	447	422	4.73	No	No	Yes
Lee County	16,828	1,081	88	81	6.42	Yes	Yes	Yes
Marion County	30,657	1,704	165	135	5.56	Yes	Yes	Yes
Marlboro County	26,118	1,758	87	113	6.73	Yes	Yes	Yes
Richmond County, NC	44,993	2,457	194	199	5.46	Yes	Yes	Yes
Robeson County, NC	130,529	8,881	523	534	6.80	Yes	Yes	Yes
Scotland County, NC	35,690	2,379	140	147	6.67	Yes	Yes	Yes
Sumter County	106,721	5,075	220	404	4.76	No	No	Yes
Union County, NC	242,657	10,852	1,069	1,034	4.47	No	No	Yes
South Carolina	5,148,714	275,733	20,957	20,124	5.36	N/A	No	Yes
North Carolina	10,630,691	483,647	42,282	42,003	4.55	N/A	No	Yes
United States	330,300,890	17,790,376	1,677,228	1,476,234	5.39	N/A	N/A	Yes
World	7,681,651,842	77,483,185	4,565,052	5,014,196	1.01	N/A	N/A	N/A

* Compared to state in which county is located

*** Weekly Change -- Red indicates more new cases than previous weekly period, green indicates same or less (change includes those reclassified to a new location)

*** CAUTION -- Reporting reliability varies widely from country to country -- comparison based on total world population with uncertain validity of case reporting.

**** Weekly changes may not match from previous weekly report due to changes/corrections made by reporting agencies.

***** SC figures include probable cases as defined by DHEC.

Schools With Cases Within Past 30 days

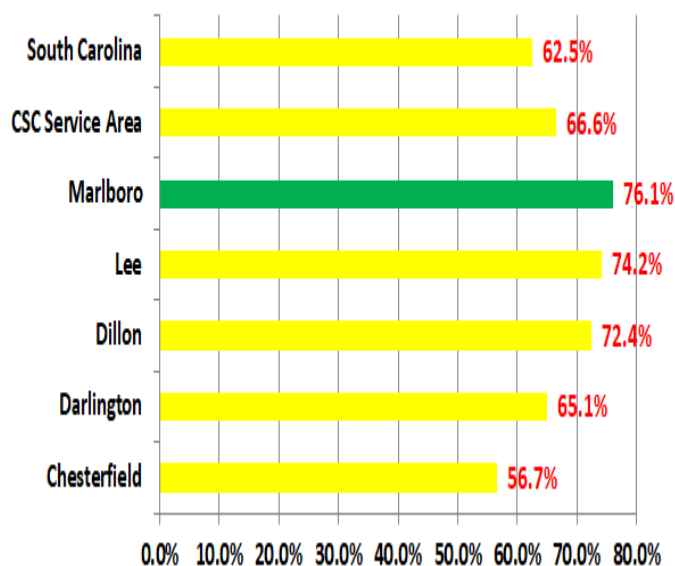
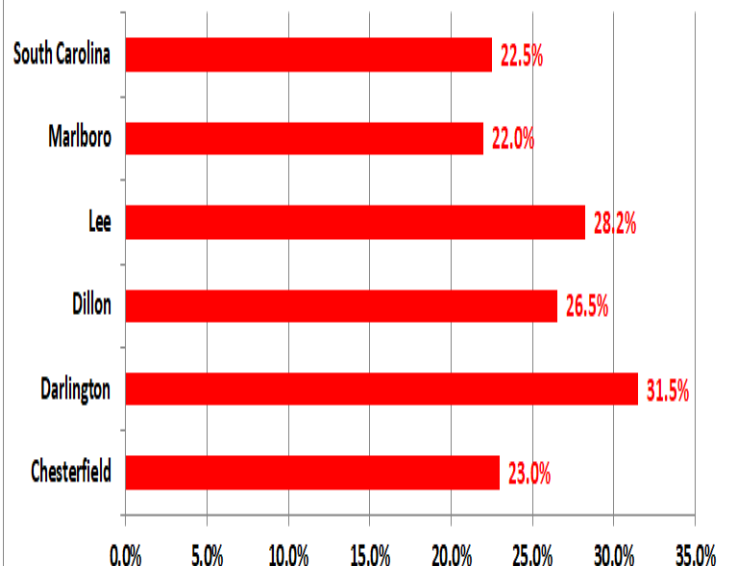
County	School	Student	Faculty
Chesterfield	Central High	<5	0
Chesterfield	Cheraw High	<5	0
Chesterfield	Cheraw Primary	0	<5
Chesterfield	Chesterfield High	<5	<5
Chesterfield	Edwards Elementary	<5	<5
Chesterfield	Jesus is Lord Christian	<5	0
Chesterfield	McBee High	<5	0
Chesterfield	New Heights Middle	<5	0
Chesterfield	Pageland Elementary	<5	0
Chesterfield	Ruby Elementary	0	<5
Darlington	Bay Road Elementary	<5	<5
Darlington	Brockington Elementary	0	<5
Darlington	Darlington High	10	0
Darlington	Darlington Middle	<5	<5
Darlington	Emmanuel Christian	<5	<5
Darlington	Hartsville Middle	<5	0
Darlington	J.L. Cain Elementary	<5	<5
Darlington	Lamar High	<5	<5
Darlington	Lamar-Spaulding Elementary	0	<5
Darlington	Mayo High	<5	<5
Darlington	North Hartsville Elementary	0	<5
Darlington	Pate Elementary	<5	0
Darlington	Southside Early Childhood Center	<5	0
Darlington	Spaulding Middle	<5	<5
Darlington	St. Johns Elementary	<5	<5
Darlington	Thomas Hart Academy	<5	0
Darlington	Trinity Collegiate	<5	0
Dillon	Dillon Christian	<5	0
Dillon	Dillon High	<5	<5
Dillon	Dillon Middle	0	<5
Dillon	East Elementary	<5	<5
Dillon	Gordon Elementary	<5	0
Dillon	Lake View High	<5	0
Dillon	Latta Elementary	<5	0
Dillon	Latta High	<5	<5
Dillon	Latta Middle	<5	0
Marlboro	Blenheim Middle School of Discovery	<5	<5
Marlboro	Clio Elementary/Middle	<5	0
Marlboro	Marlboro County High	<5	0
Marlboro	McColl Elementary/Middle	<5	<5
Marlboro	Wallace Elementary/Middle	<5	0

* as reported by DHEC as of 12/16/20

Active Cases in Long Term Care Facilities

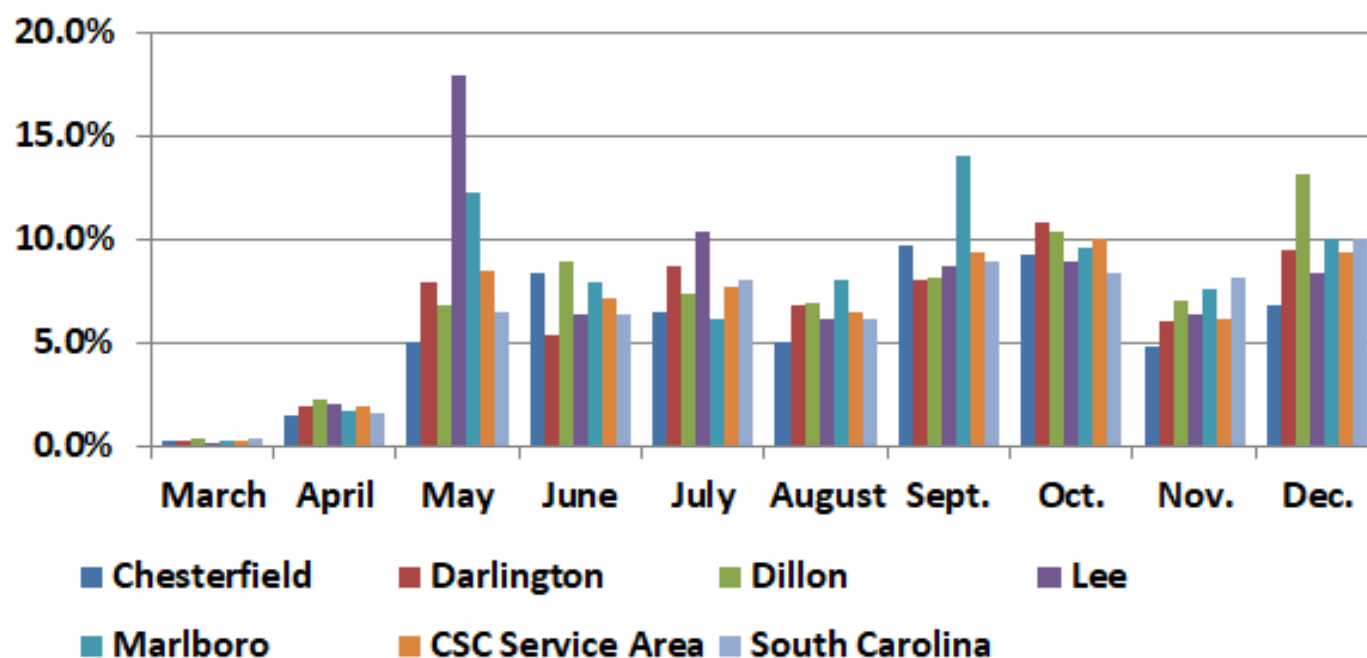
County	Facility
Chesterfield	Cheraw Healthcare
Chesterfield	Palmetto Ridge Assisted Living
Chesterfield	Rehab Center of Cheraw
Darlington	Morrell Nursing Center
Darlington	Thad E. Saleeby Development Center
Dillon	Pruitt Health--Dillon
Lee	McCoy Memorial Nursing Center

* as reported by DHEC as of 12/13/20

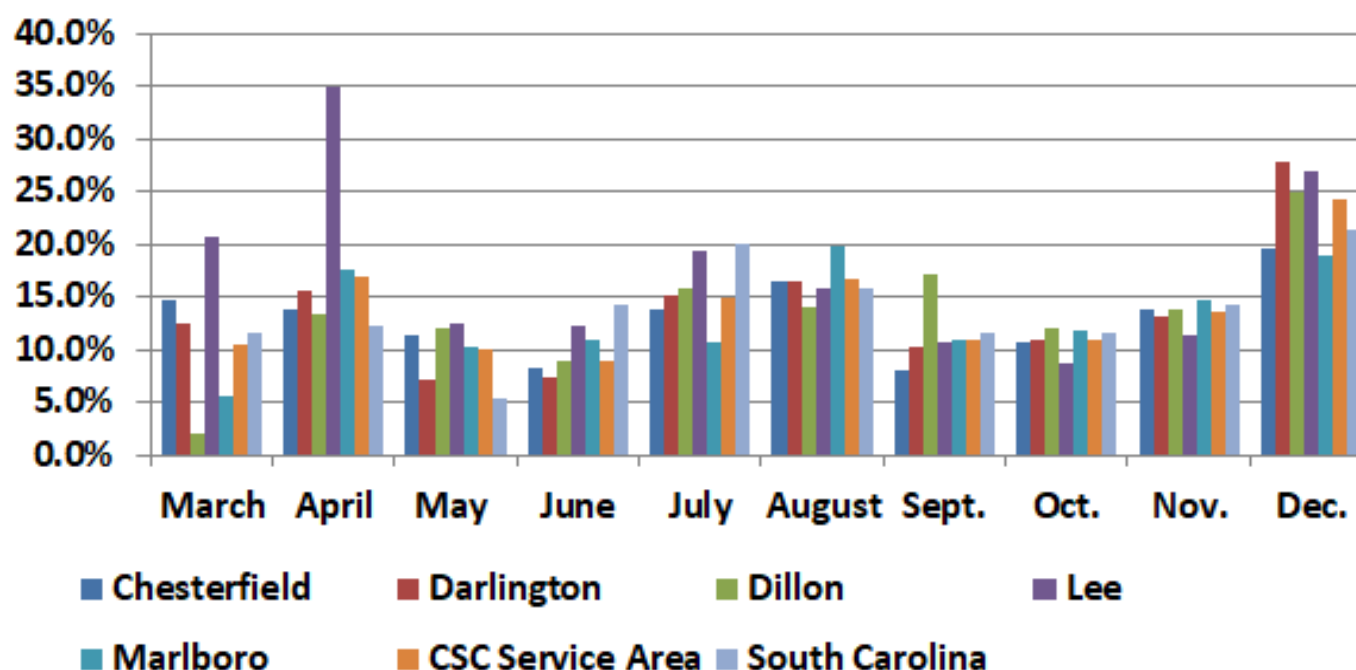
Total % of Population Tested***7 Day Average Positivity Rate**

*Tests as percentage of total population. Includes repetitive testing on same individual.

% of Population Tested by Month*

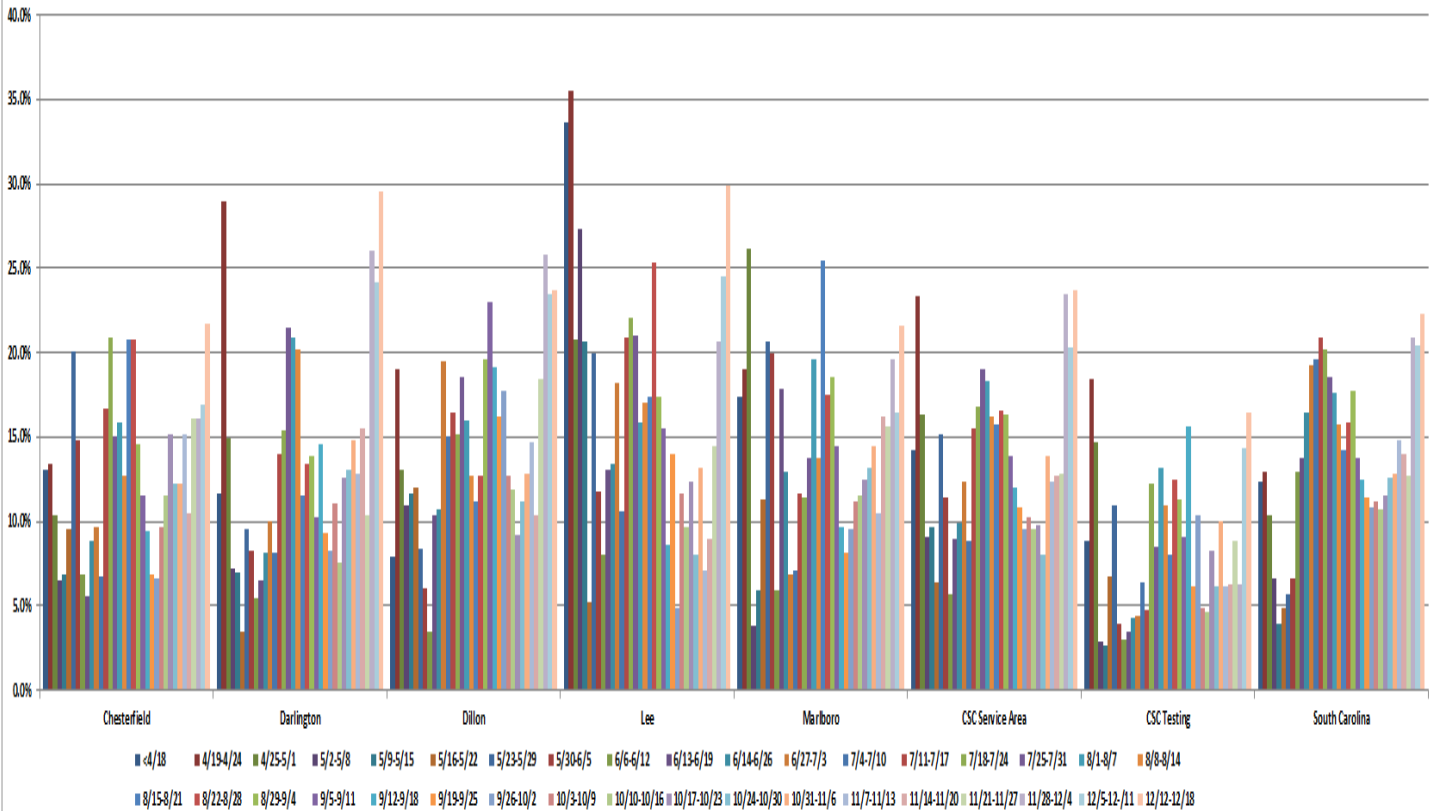


Positivity Rate by Month

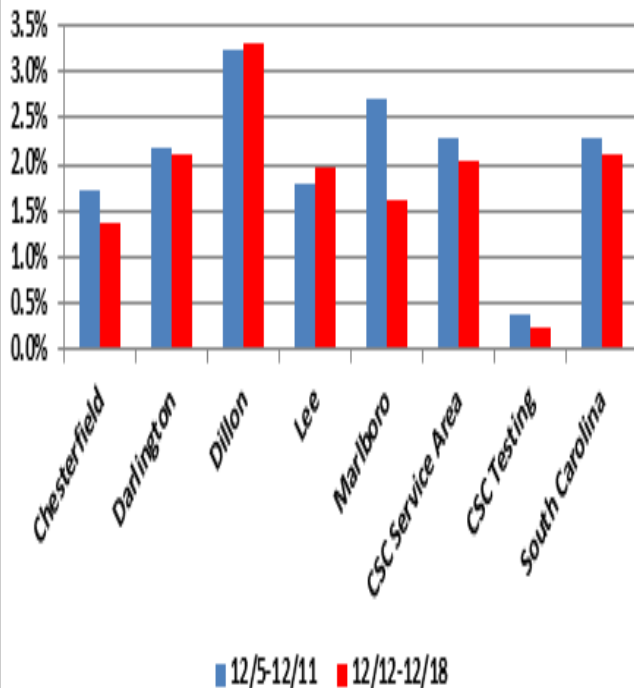


* Incomplete month prorated for complete month comparison. Tests as percentage of total population. Includes repetitive testing on same individual.

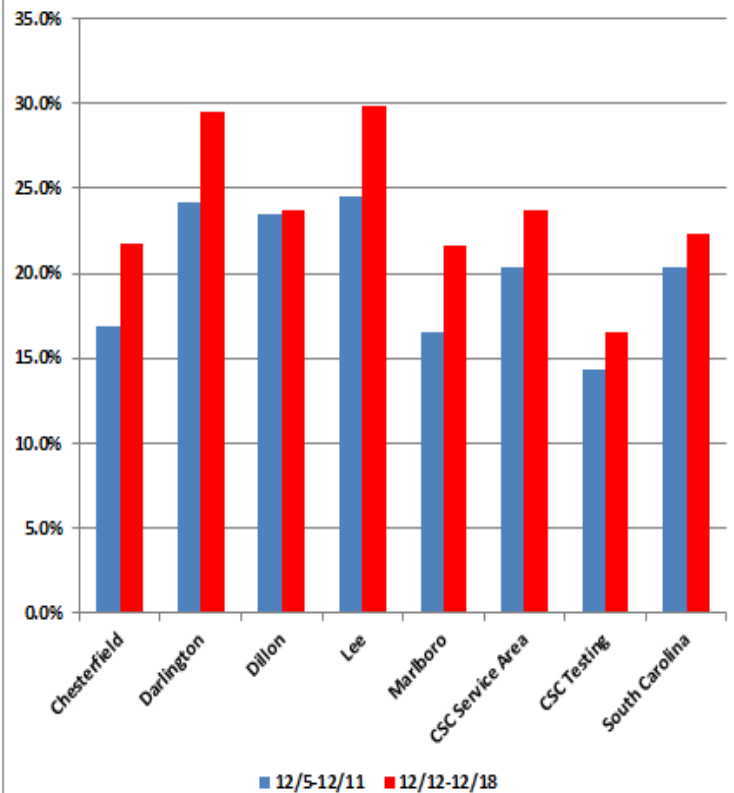
Rate of Positive Results by Week



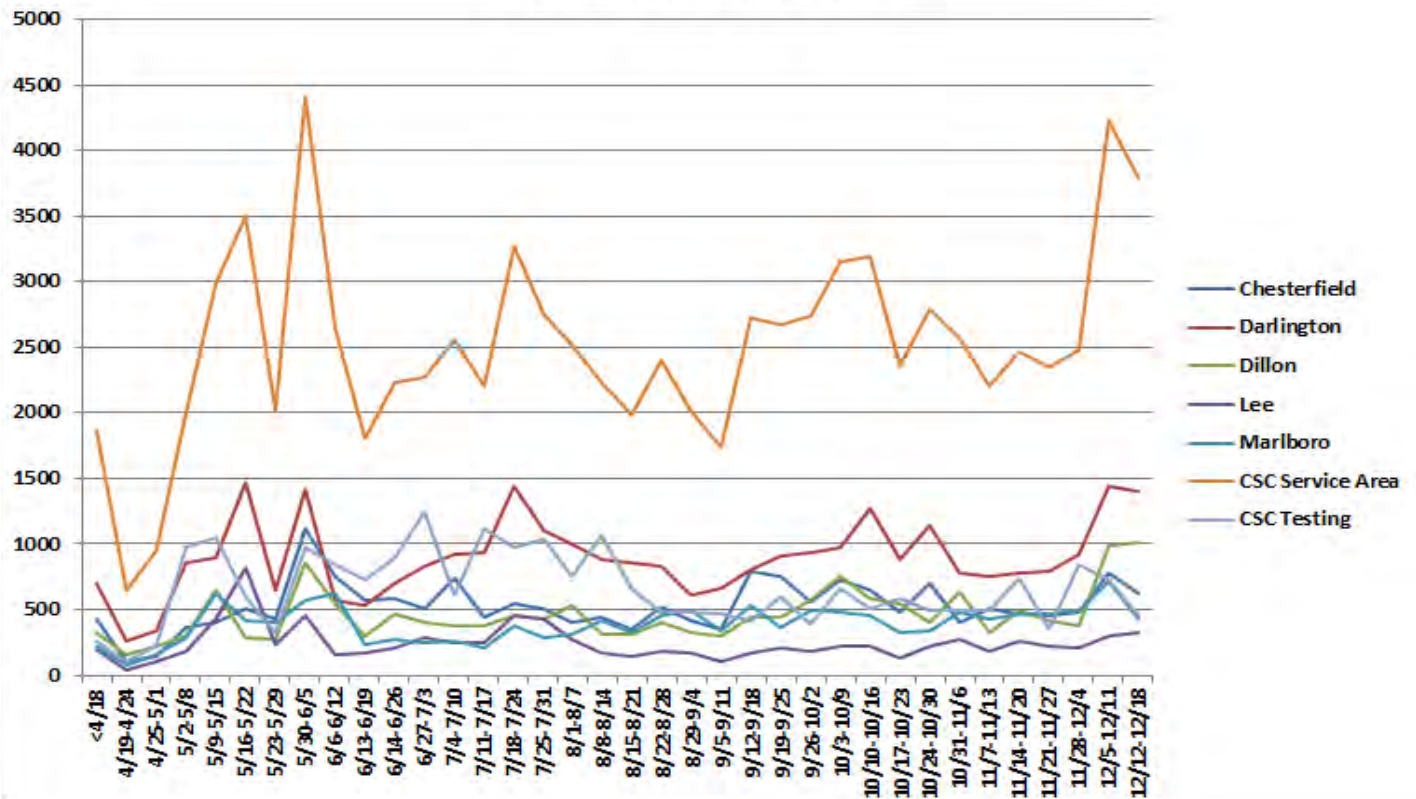
% of Population Tested Last 2 Weeks



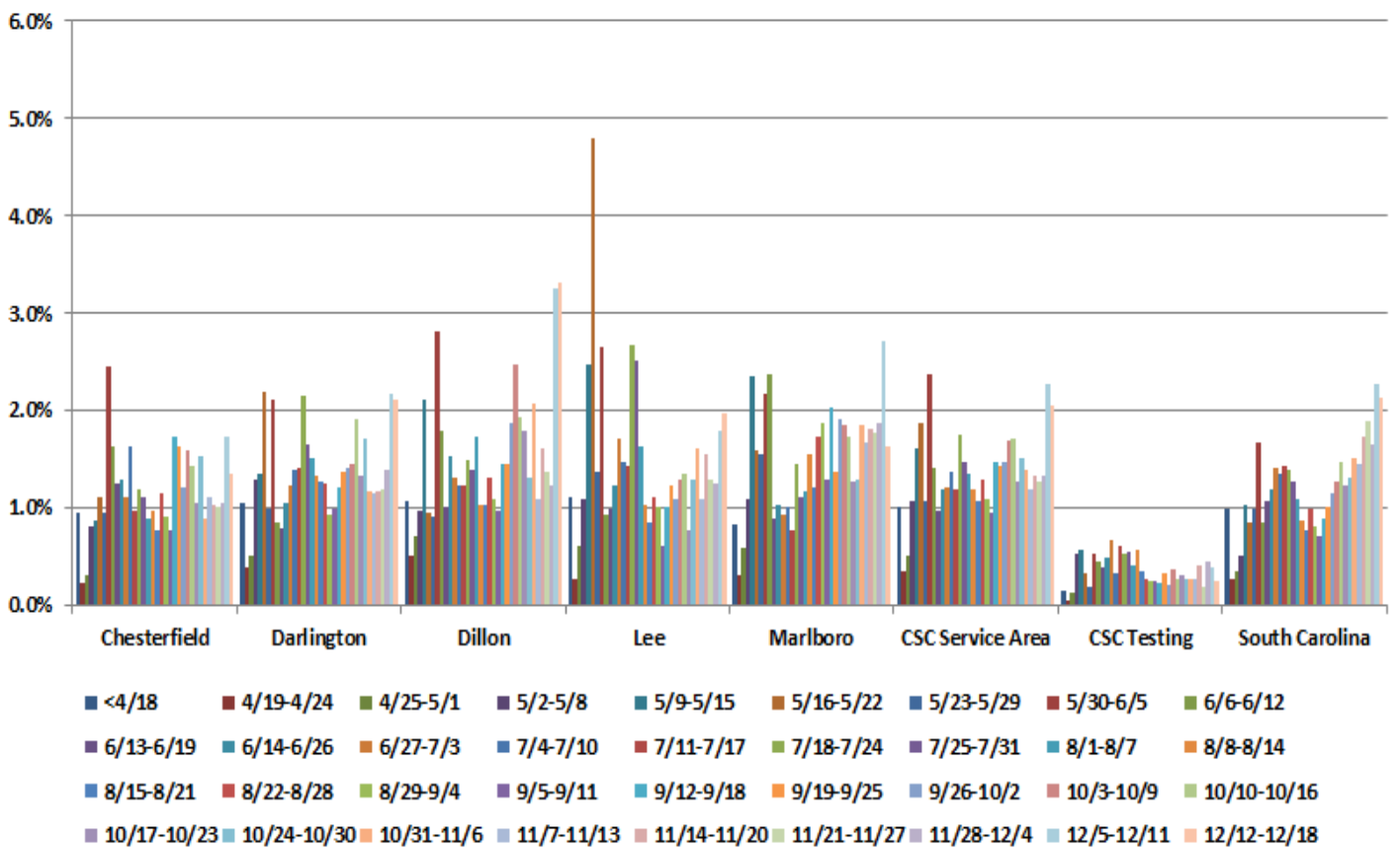
Past Two Weeks Rate of Positive Results



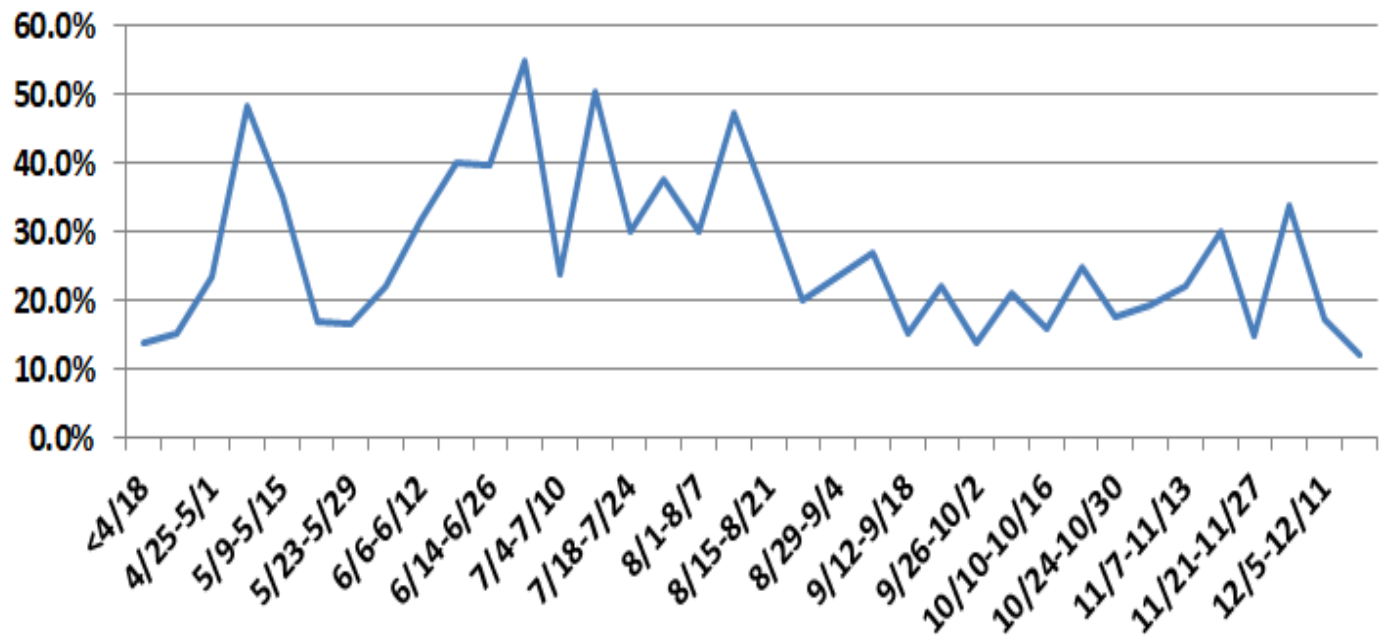
Total Testing by Week



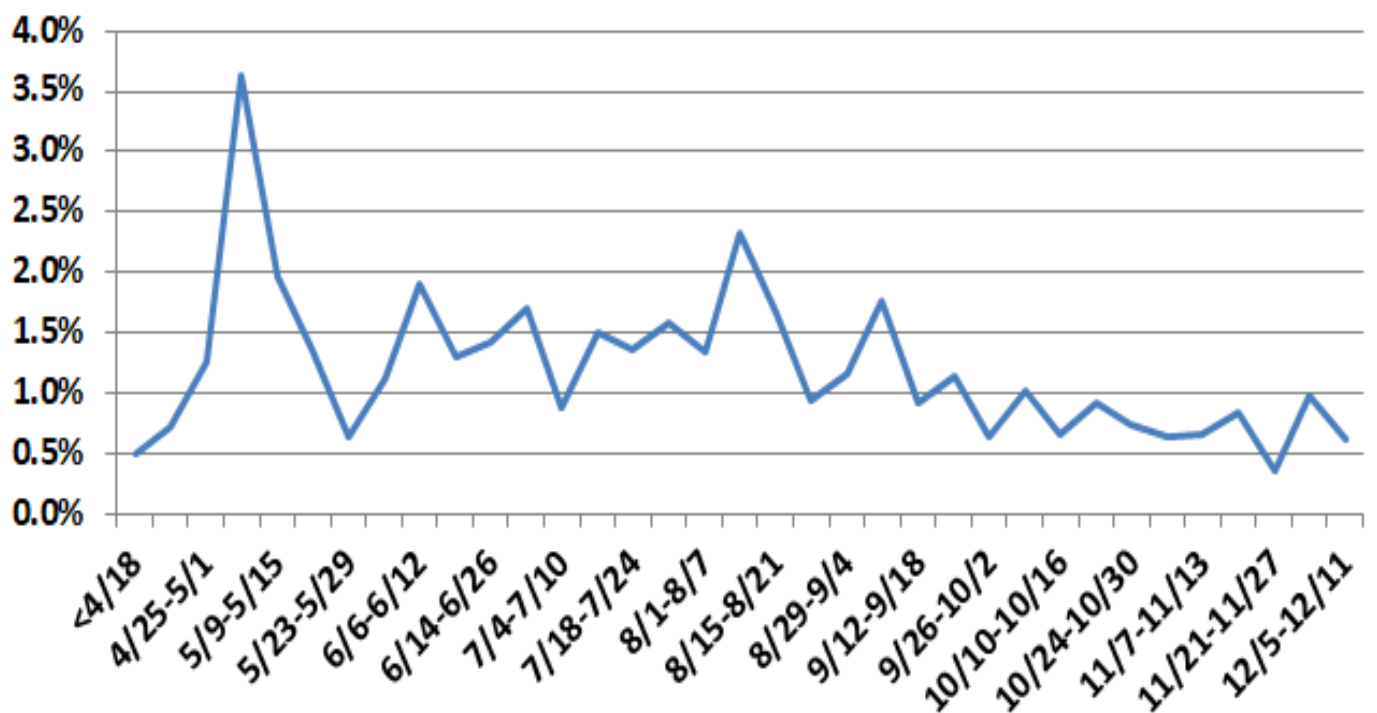
Percent of Population Tested by Week



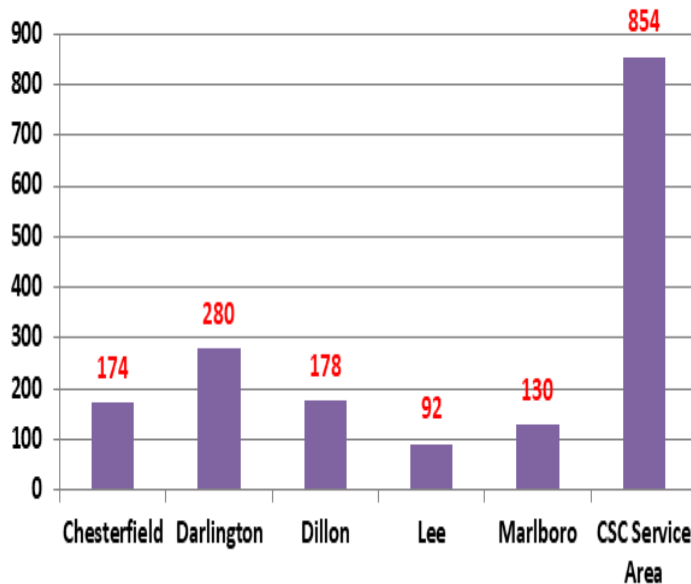
CSC Testing as % of Total Testing in Service Area



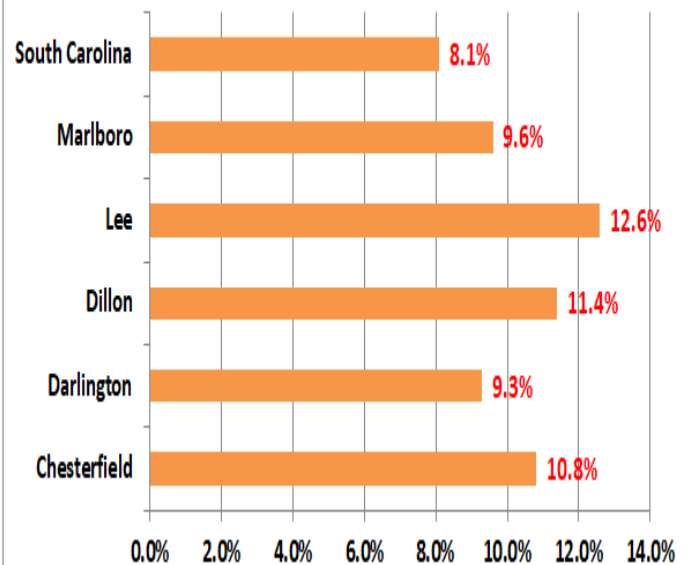
CSC Testing as % of Total SC Testing



Total Hospitalizations



Rate of Hospitalization



Hospital Utilization

All Hospitals Inpatient Bed Utilization Rate by Region

Region	Total Inpatient Beds	Occupied Inpatient Beds	Utilization Rate
Lowcountry:	2,552	1,980	77.59%
Midlands:	2,801	2,118	75.62%
Pee Dee:	2,380	1,905	80.04%
Upstate:	3,284	2,592	78.93%

Pee Dee Counties Hospital Utilization

County	Beds Occupied	Beds Available	Percent Occupied
Chesterfield	37	11	77.1%
Darlington	59	30	66.3%
Dillon	37	2	94.9%
Florence	642	81	88.8%
Marion	29	1	96.7%

Hospital Bed Occupancy

Inpatient beds: 2,422 available; 8,595 in use; 78.02% utilization rate; 1,523 inpatient beds occupied by

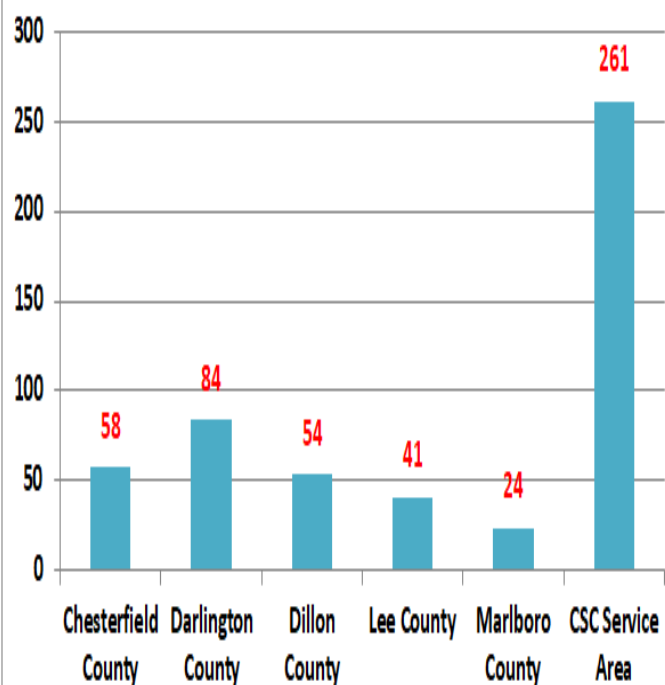
COVID-19 patients (confirmed or suspected)

ICU beds: 402 available; 1,286 in use; 76.18% utilization rate; 324 ICU beds occupied by COVID-19 patients (confirmed or suspected)

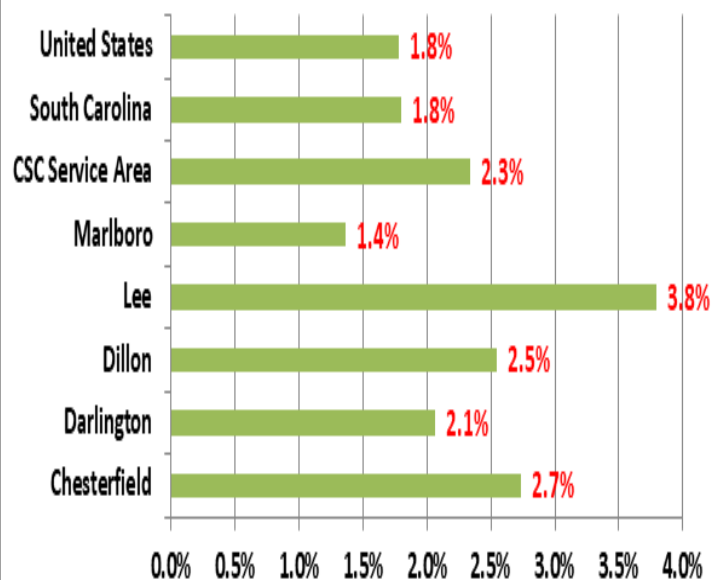
Ventilators: 1,388 available; 552 in use; 165 by COVID-19 patients (confirmed or suspected)

As of 12/21/2020	Inpatient Bed Utilization	ICU Bed Utilization	Ventilator Utilization	COVID-19 Patients	COVID-19 Patients in ICU	COVID-19 Patients Ventilated
All Hospitals	8,595 (78.02%) of 11,017	1,286 (76.18%) of 1,688	552 (28.45%) of 1,940	1523 (17.72%) of 8,595	324 (21.27%) of 1523	165 (10.83%) of 1523
Acute Care Hospitals	7,426 (79.10%) of 9,388	1,284 (76.20%) of 1,685	520 (27.66%) of 1,880	1456 (19.61%) of 7,426	324 (22.25%) of 1456	165 (11.33%) of 1456
Other Hospitals	1,169 (71.76%) of 1,629	2 (66.67%) of 3	32 (53.33%) of 60	67 (5.73%) of 1169	0 (0.00%) of 67	0 (0.00%) of 67

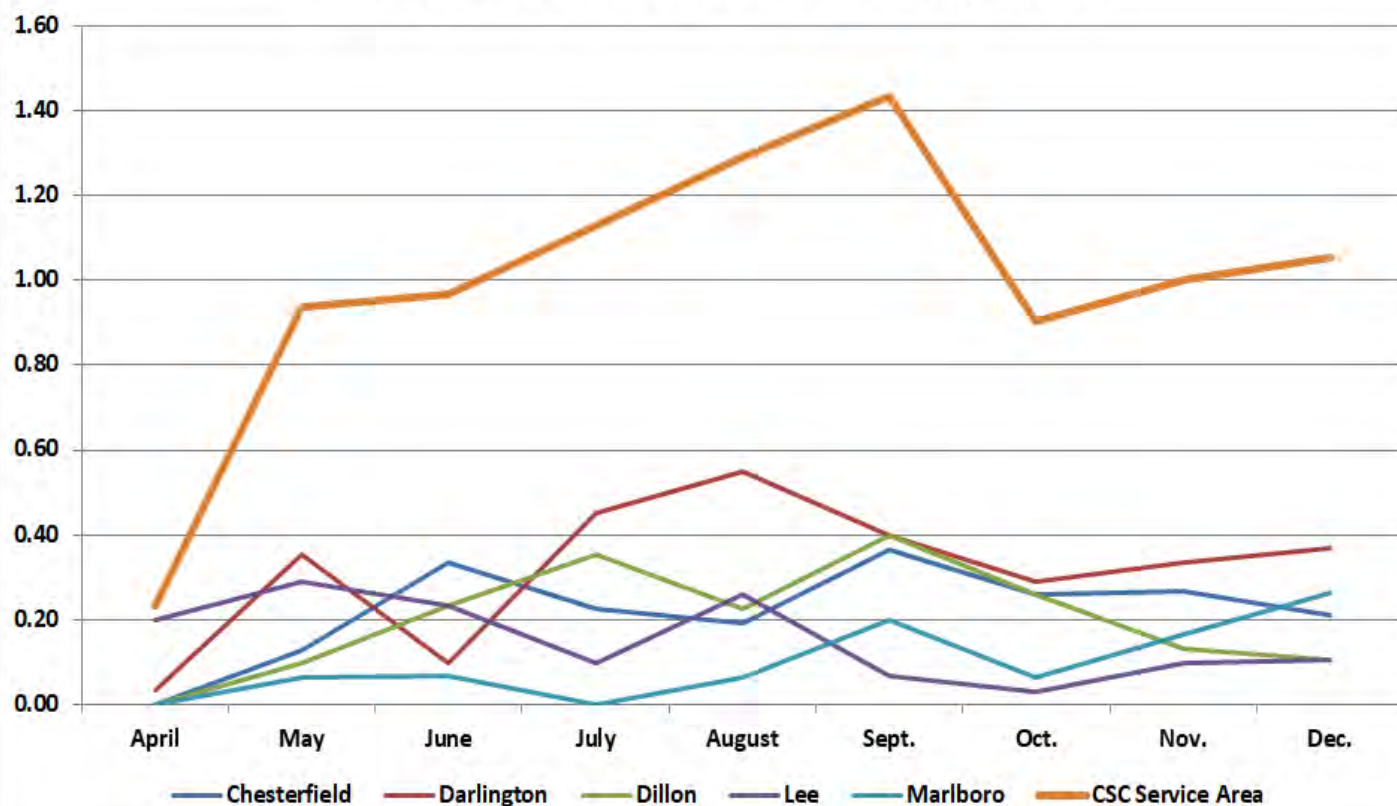
Covid-19 Deaths



Percent of Covid-19 Cases Resulting in Death



Rate of Covid-19 Deaths Per Day by Month



Rankings/Risk Factors

Harvard Global Health Institute Risk Levels

County	Risk Level	SC Rank*	US Rank**
Dillon County	Red	2	343
Darlington County	Red	5	508
Lee County	Red	8	702
Marlboro County	Red	26	1762
Chesterfield County	Red	36	2072

* out of 46 counties ** out of 3142 counties or equivalents

Pandemic Vulnerability Index*

County	Rank*
Dillon County	13
Lee County	112
Darlington County	140
Chesterfield County	266
Marlboro County	312

* out of 3142 counties or equivalents

Covid Act Now Risk Levels

County	Risk Level
Chesterfield County	Active/Imminent
Darlington County	Severe
Dillon County	Severe
Lee County	Active/Imminent
Marlboro County	Active/Imminent

Cumulative Rate State Rank

County	Rank*
Dillon County	2
Lee County	8
Marlboro County	9
Darlington County	23
Chesterfield County	45

* out of 46 counties

National Social Distancing Scoreboard

Location	Grade
Chesterfield County	D+
Darlington County	D
Dillon County	D+
Lee County	D+
Marlboro County	B-
South Carolina	F
United States	D+

Cuebiq Mobility Index

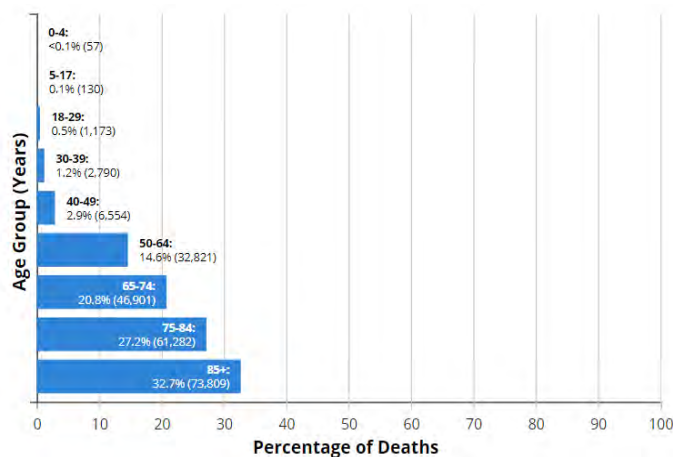
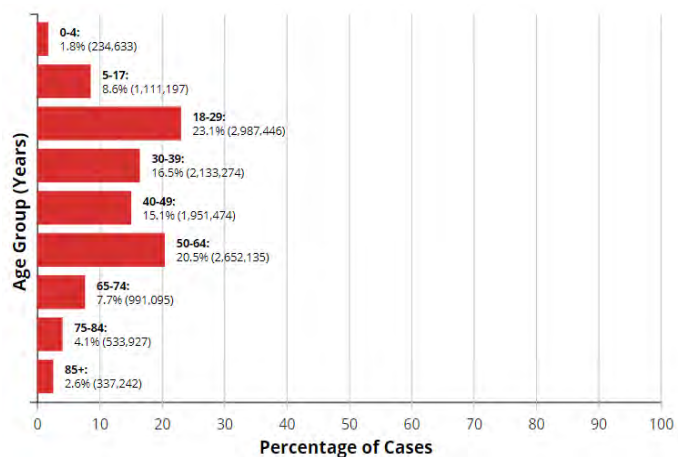
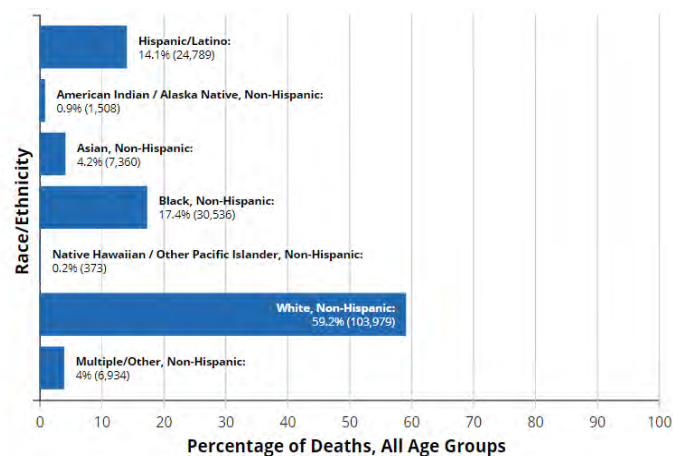
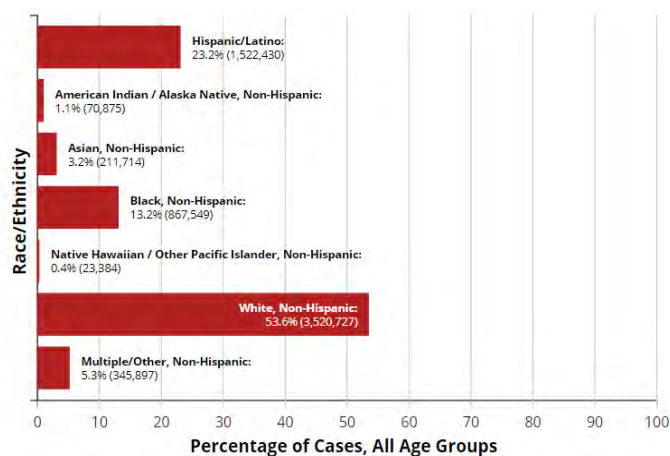
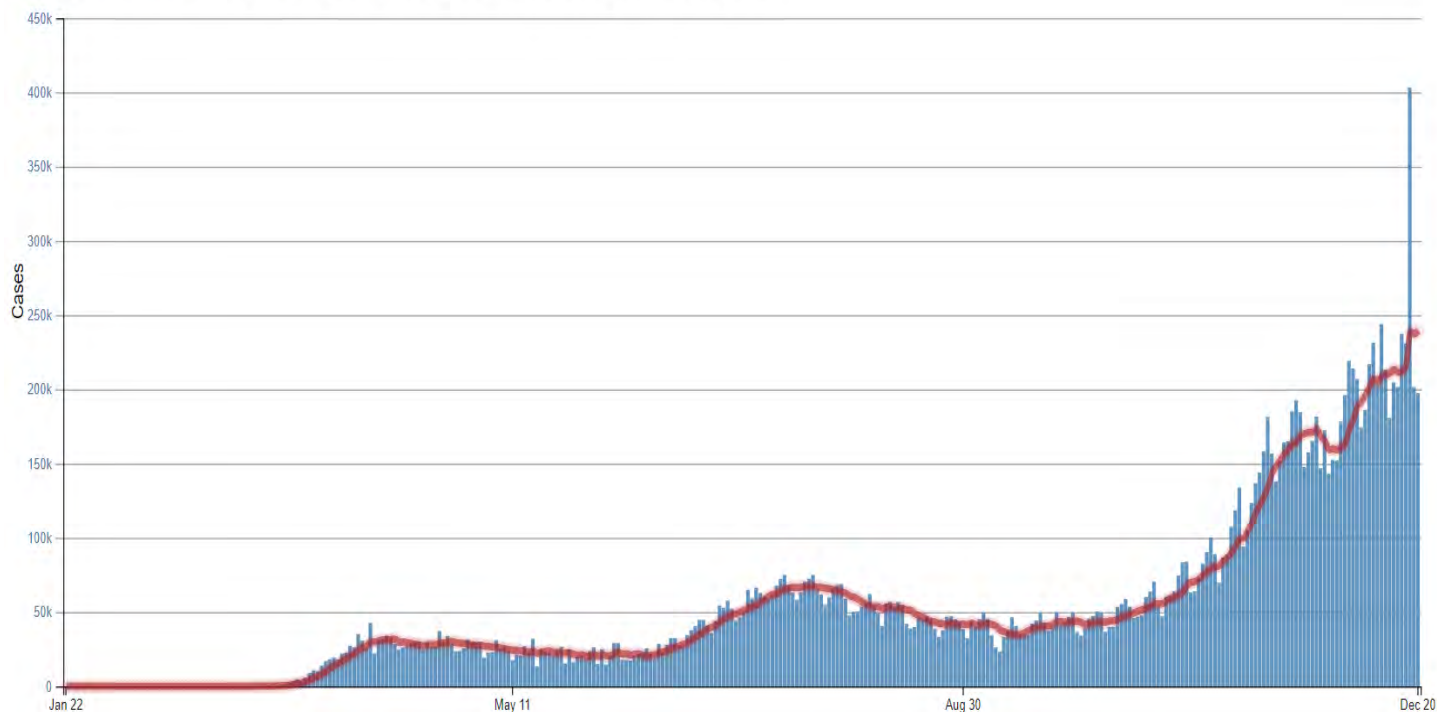
Chesterfield County	4.2
Darlington County	4.1
Dillon County	4.0
Lee County	4.3
Marlboro County	4.0
South Carolina	4.0
United States	3.8

* Lower # equates to less mobility

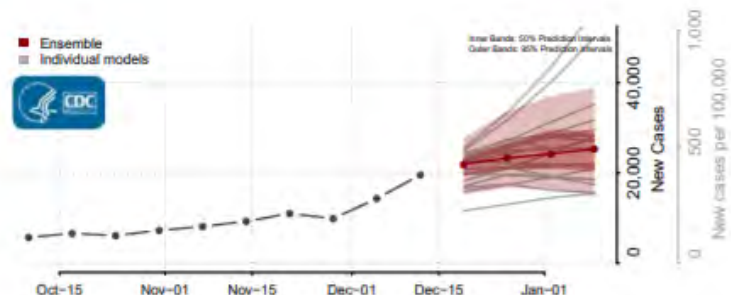
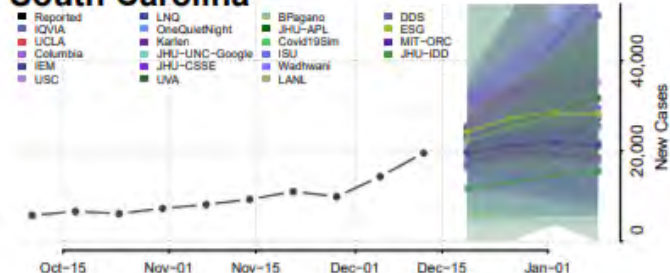
* Pandemic Vulnerability Index is calculated by the NIH. It includes 12 factors including demographics, co-morbidities, health disparities, testing, current cases, etc.

CDC Information:

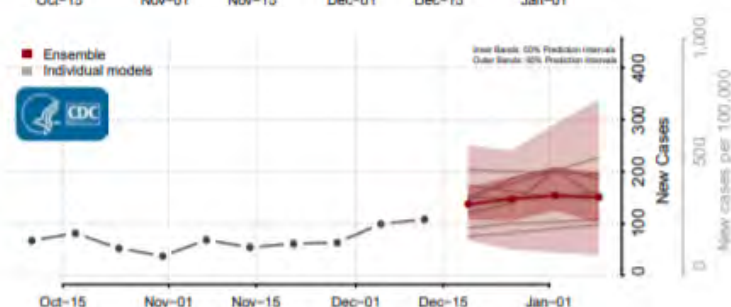
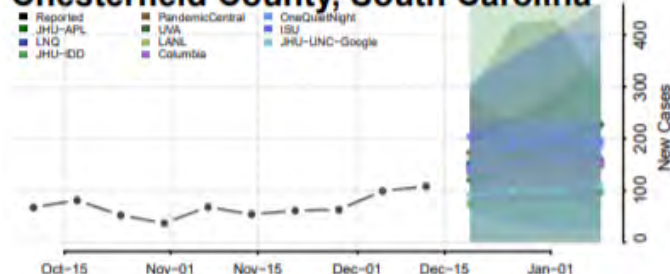
Daily Trends in Number of COVID-19 Cases in the United States Reported to CDC



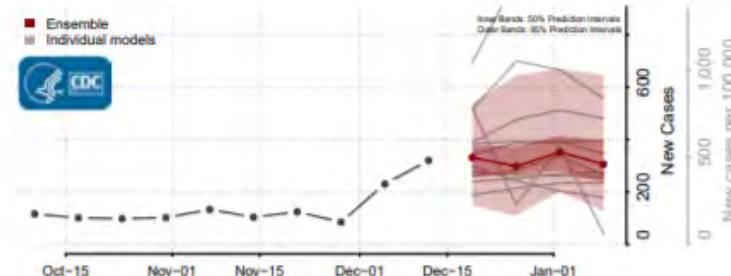
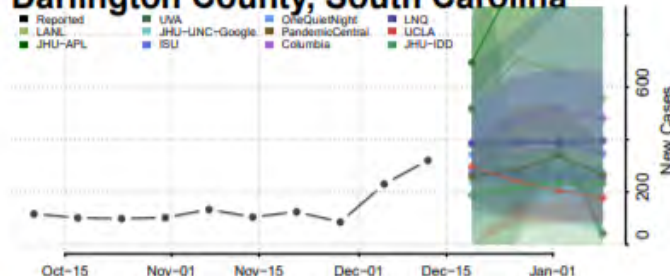
South Carolina**



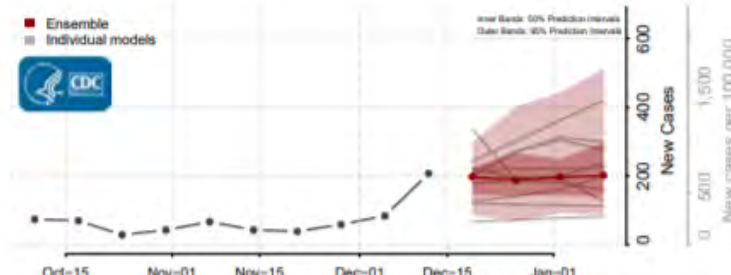
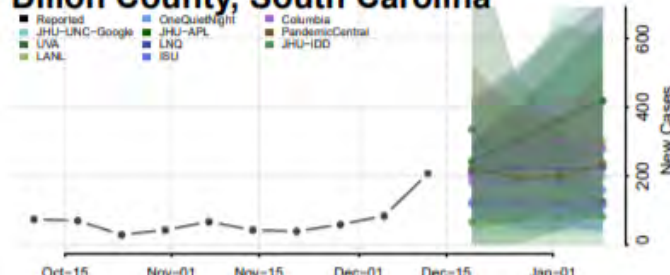
Chesterfield County, South Carolina



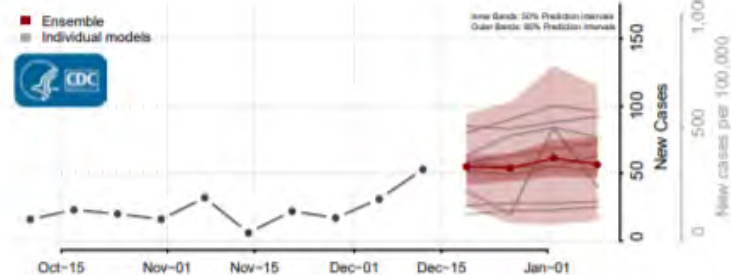
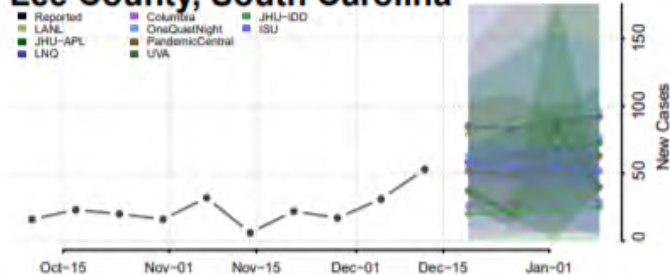
Darlington County, South Carolina



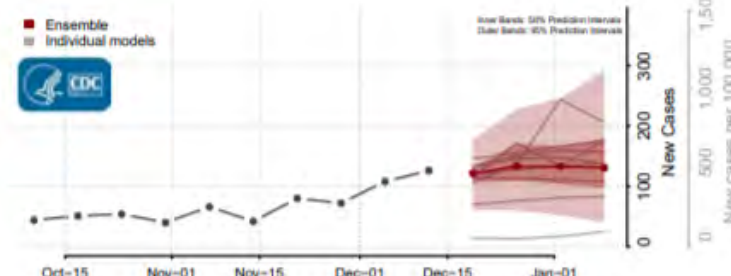
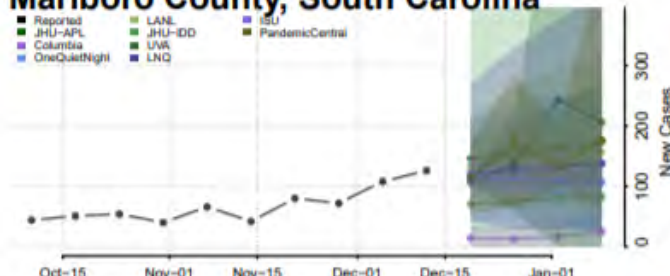
Dillon County, South Carolina



Lee County, South Carolina



Marlboro County, South Carolina



DHEC Information:

COVID-19 in South Carolina As of 11:59 PM on 12/19/2020

Number of Tests All	Cases All	Hospitalizations All	Deaths All
3,342,677	275,733	13,466	4,962
Go to Testing	Go to Cases	Go to Hospitalizations	Go to Deaths

Two Week Cumulative Incidence Rate

The Two-Week Cumulative Incidence Rate includes new (confirmed) cases reported in the past two weeks (December 6, 2020 - December 19, 2020) per 100,000 people. The rate describes recent incidence of COVID-19 infection to capture the potential burden of currently ill people who may be infectious and/or accessing healthcare.

Select a county to display county-specific information
Click the county again to return to the full state map



© OpenStreetMap

Low Incidence: 0-50 Moderate Incidence: 51-200 High Incidence: >200

State Recovery Estimate

87.8%

As of December 19, 2020, of the total positive cases of COVID-19 in South Carolina (275,733), we have symptom onset data (meaning, the date when a person first showed signs of illness) for 160,120 of those individuals. Of those individuals, 3,411 have unfortunately died. Our recovery rate data is based on symptom onset information, so the percentages below are based on the number of individuals we have symptom onset data for, NOT the total number of cases in the state.

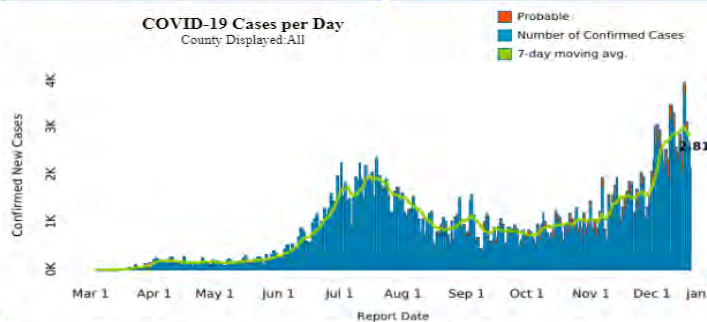
As of December 19, 2020, 87.8% of those 166,709 individuals for which we have symptom onset data are estimated to have recovered from COVID-19, and 12.2% are estimated to remain ill.

Note: These data are provisional. The estimated percent of those who may have recovered from COVID-19 is based upon the following parameters:

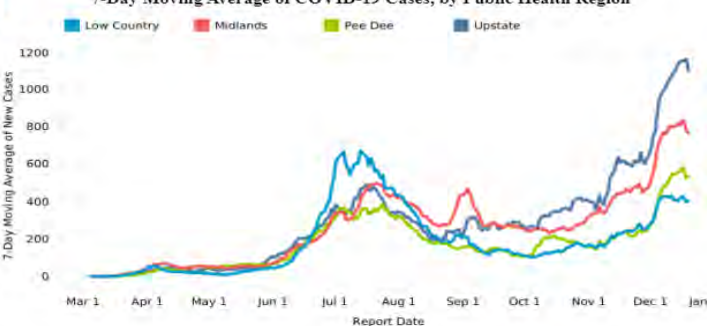
1. Those who reported being hospitalized were deemed as "recovered" based upon having no reported adverse outcome reported as of >32 days since their illness onset.
2. Those who reported not being hospitalized were deemed as "recovered" based upon having no reported adverse outcome reported as of >14 days since their illness onset.
3. Those where hospitalization status was unknown were deemed as "recovered" based upon having no reported adverse outcome reported as of >32 days since their illness onset.

COVID-19 Cases per Day

County Displayed: All



7-Day Moving Average of COVID-19 Cases, by Public Health Region



COVID-19 in South Carolina As of 11:59 PM on 12/19/2020

Number of Tests Chesterfield	Cases Chesterfield	Hospitalizations Chesterfield	Deaths Chesterfield
26,134	2,121	174	58
Go to Testing	Go to Cases	Go to Hospitalizations	Go to Deaths

Two Week Cumulative Incidence Rate

The Two-Week Cumulative Incidence Rate includes new (confirmed) cases reported in the past two weeks (December 6, 2020 - December 19, 2020) per 100,000 people. The rate describes recent incidence of COVID-19 infection to capture the potential burden of currently ill people who may be infectious and/or accessing healthcare.

Select a county to display county-specific information
Click the county again to return to the full state map



© OpenStreetMap

Low Incidence: 0-50 Moderate Incidence: 51-200 High Incidence: >200

State Recovery Estimate

87.8%

As of December 19, 2020, of the total positive cases of COVID-19 in South Carolina (275,733), we have symptom onset data (meaning, the date when a person first showed signs of illness) for 160,120 of those individuals. Of those individuals, 3,411 have unfortunately died. Our recovery rate data is based on symptom onset information, so the percentages below are based on the number of individuals we have symptom onset data for, NOT the total number of cases in the state.

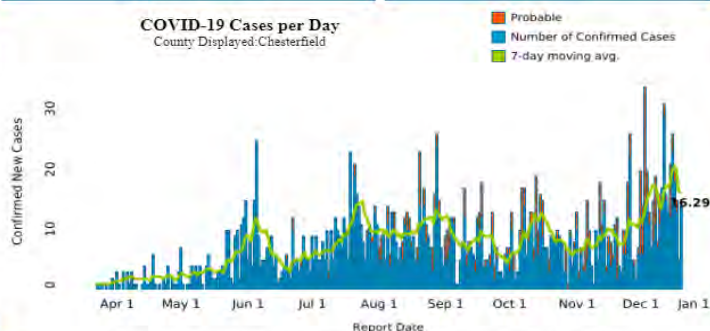
As of December 19, 2020, 87.8% of those 166,709 individuals for which we have symptom onset data are estimated to have recovered from COVID-19, and 12.2% are estimated to remain ill.

Note: These data are provisional. The estimated percent of those who may have recovered from COVID-19 is based upon the following parameters:

1. Those who reported being hospitalized were deemed as "recovered" based upon having no reported adverse outcome reported as of >32 days since their illness onset.
2. Those who reported not being hospitalized were deemed as "recovered" based upon having no reported adverse outcome reported as of >14 days since their illness onset.
3. Those where hospitalization status was unknown were deemed as "recovered" based upon having no reported adverse outcome reported as of >32 days since their illness onset.

COVID-19 Cases per Day

County Displayed: Chesterfield



7-Day Moving Average of COVID-19 Cases, by Public Health Region



COVID-19 in South Carolina

As of 11:59 PM on 12/19/2020

Number of Tests Darlington	Cases Darlington	Hospitalizations Darlington	Deaths Darlington
45,386	4,065	280	84
Go to Testing	Go to Cases	Go to Hospitalizations	Go to Deaths

Two Week Cumulative Incidence Rate

The Two-Week Cumulative Incidence Rate includes new (confirmed) cases reported in the past two weeks (December 6, 2020 - December 19, 2020) per 100,000 people. The rate describes recent incidence of COVID-19 infection to capture the potential burden of currently ill people who may be infectious and/or accessing healthcare.

Select a county to display county-specific information
Click the county again to return to the full state map



© OpenStreetMap

Low Incidence: 0-50 Moderate Incidence: 51-200 High Incidence: >200

State Recovery Estimate

87.8%

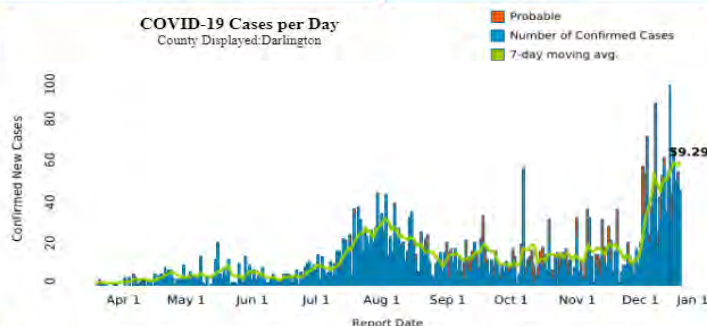
As of December 19, 2020, of the total positive cases of COVID-19 in South Carolina (275,733), we have symptom onset data (meaning, the date when a person first showed signs of illness) for 160,120 of those individuals. Of those individuals, 3,411 have unfortunately died. Our recovery rate data is based on symptom onset information, so the percentages below are based on the number of individuals we have symptom onset data for, NOT the total number of cases in the state.

As of December 19, 2020, 87.8% of those 166,709 individuals for which we have symptom onset data are estimated to have recovered from COVID-19, and 12.2% are estimated to remain ill.

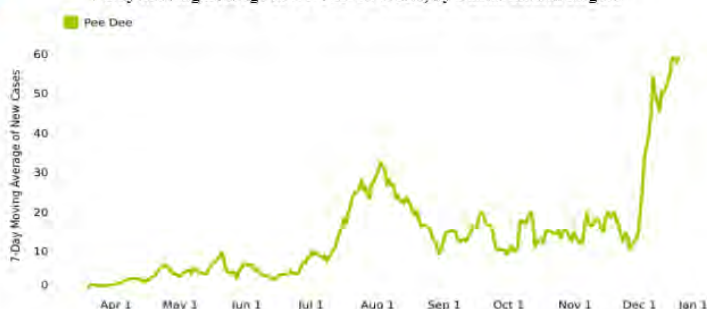
Note: These data are provisional. The estimated percent of those who may have recovered from COVID-19 is based upon the following parameters:
1. Those who reported being hospitalized were deemed as "recovered" based upon having no reported adverse outcome reported as of >32 days since their illness onset.
2. Those who reported not being hospitalized were deemed as "recovered" based upon having no reported adverse outcome reported as of >14 days since their illness onset.
3. Those where hospitalization status was unknown were deemed as "recovered" based upon having no reported adverse outcome reported as of >32 days since their illness onset.

COVID-19 Cases per Day

County Displayed: Darlington



7-Day Moving Average of COVID-19 Cases, by Public Health Region



COVID-19 in South Carolina

As of 11:59 PM on 12/19/2020

Number of Tests Dillon	Cases Dillon	Hospitalizations Dillon	Deaths Dillon
21,454	2,118	178	54
Go to Testing	Go to Cases	Go to Hospitalizations	Go to Deaths

Two Week Cumulative Incidence Rate

The Two-Week Cumulative Incidence Rate includes new (confirmed) cases reported in the past two weeks (December 6, 2020 - December 19, 2020) per 100,000 people. The rate describes recent incidence of COVID-19 infection to capture the potential burden of currently ill people who may be infectious and/or accessing healthcare.

Select a county to display county-specific information
Click the county again to return to the full state map



© OpenStreetMap

Low Incidence: 0-50 Moderate Incidence: 51-200 High Incidence: >200

State Recovery Estimate

87.8%

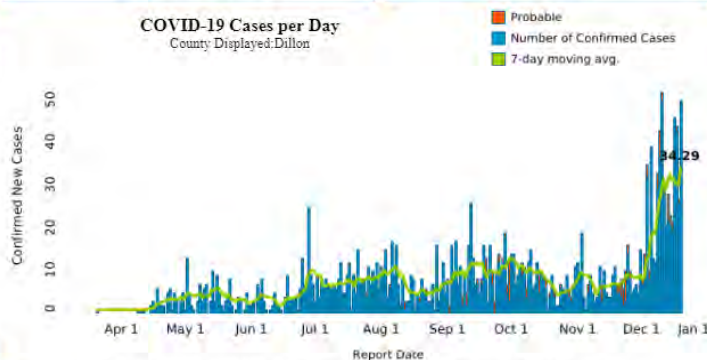
As of December 19, 2020, of the total positive cases of COVID-19 in South Carolina (275,733), we have symptom onset data (meaning, the date when a person first showed signs of illness) for 160,120 of those individuals. Of those individuals, 3,411 have unfortunately died. Our recovery rate data is based on symptom onset information, so the percentages below are based on the number of individuals we have symptom onset data for, NOT the total number of cases in the state.

As of December 19, 2020, 87.8% of those 166,709 individuals for which we have symptom onset data are estimated to have recovered from COVID-19, and 12.2% are estimated to remain ill.

Note: These data are provisional. The estimated percent of those who may have recovered from COVID-19 is based upon the following parameters:
1. Those who reported being hospitalized were deemed as "recovered" based upon having no reported adverse outcome reported as of >32 days since their illness onset.
2. Those who reported not being hospitalized were deemed as "recovered" based upon having no reported adverse outcome reported as of >14 days since their illness onset.
3. Those where hospitalization status was unknown were deemed as "recovered" based upon having no reported adverse outcome reported as of >32 days since their illness onset.

COVID-19 Cases per Day

County Displayed: Dillon



7-Day Moving Average of COVID-19 Cases, by Public Health Region



COVID-19 in South Carolina

As of 11:59 PM on 12/19/2020

Number of Tests Lee	Cases Lee	Hospitalizations Lee	Deaths Lee
13,144	1,081	92	41
Go to Testing	Go to Cases	Go to Hospitalizations	Go to Deaths

Two Week Cumulative Incidence Rate

The Two-Week Cumulative Incidence Rate includes new (confirmed) cases reported in the past two weeks (December 6, 2020 - December 19, 2020) per 100,000 people. The rate describes recent incidence of COVID-19 infection to capture the potential burden of currently ill people who may be infectious and/or accessing healthcare.

Select a county to display county-specific information
Click the county again to return to the full state map



© OpenStreetMap

Low Incidence: 0-50 Moderate Incidence: 51-200 High Incidence: >200

State Recovery Estimate

87.8%

As of December 19, 2020, of the total positive cases of COVID-19 in South Carolina (275,733), we have symptom onset data (meaning, the date when a person first showed signs of illness) for 160,120 of those individuals. Of those individuals, 3,411 have unfortunately died. Our recovery rate data is based on symptom onset information, so the percentages below are based on the number of individuals we have symptom onset data for, NOT the total number of cases in the state.

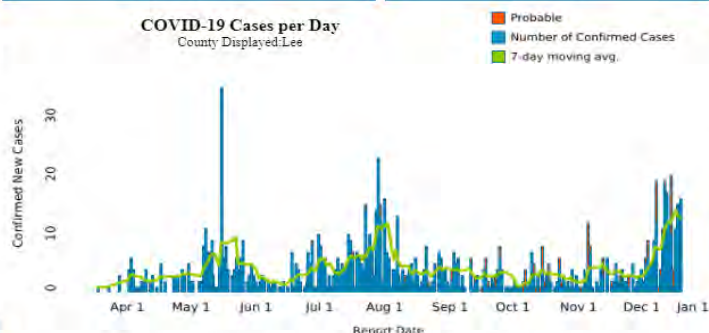
As of December 19, 2020, 87.8% of those 156,709 individuals for which we have symptom onset data are estimated to have recovered from COVID-19, and 12.2% are estimated to remain ill.

Note: These data are provisional. The estimated percent of those who may have recovered from COVID-19 is based upon the following parameters:

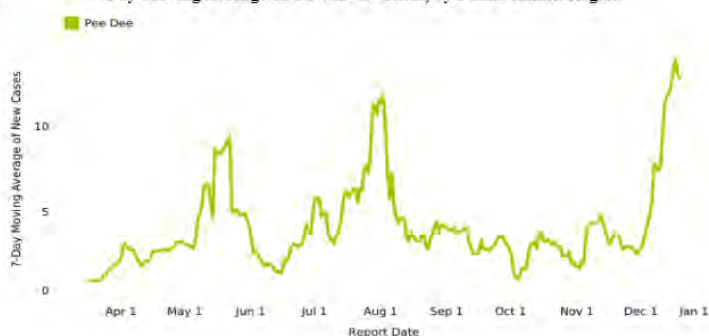
1. Those who reported being hospitalized were deemed as "recovered" based upon having no reported adverse outcome reported as of >32 days since their illness onset.
2. Those who reported not being hospitalized were deemed as "recovered" based upon having no reported adverse outcome reported as of >14 days since their illness onset.
3. Those whose hospitalization status was unknown were deemed as "recovered" based upon having no reported adverse outcome reported as of >32 days since their illness onset.

COVID-19 Cases per Day

County Displayed: Lee



7-Day Moving Average of COVID-19 Cases, by Public Health Region



COVID-19 in South Carolina

As of 11:59 PM on 12/19/2020

Number of Tests Marlboro	Cases Marlboro	Hospitalizations Marlboro	Deaths Marlboro
20,620	1,758	130	24
Go to Testing	Go to Cases	Go to Hospitalizations	Go to Deaths

Two Week Cumulative Incidence Rate

The Two-Week Cumulative Incidence Rate includes new (confirmed) cases reported in the past two weeks (December 6, 2020 - December 19, 2020) per 100,000 people. The rate describes recent incidence of COVID-19 infection to capture the potential burden of currently ill people who may be infectious and/or accessing healthcare.

Select a county to display county-specific information
Click the county again to return to the full state map



© OpenStreetMap

Low Incidence: 0-50 Moderate Incidence: 51-200 High Incidence: >200

State Recovery Estimate

87.8%

As of December 19, 2020, of the total positive cases of COVID-19 in South Carolina (275,733), we have symptom onset data (meaning, the date when a person first showed signs of illness) for 160,120 of those individuals. Of those individuals, 3,411 have unfortunately died. Our recovery rate data is based on symptom onset information, so the percentages below are based on the number of individuals we have symptom onset data for, NOT the total number of cases in the state.

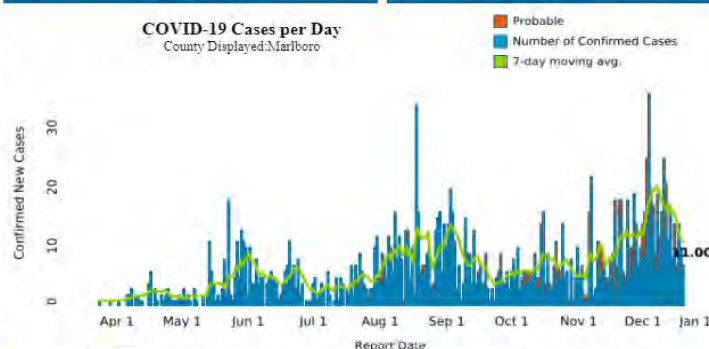
As of December 19, 2020, 87.8% of those 156,709 individuals for which we have symptom onset data are estimated to have recovered from COVID-19, and 12.2% are estimated to remain ill.

Note: These data are provisional. The estimated percent of those who may have recovered from COVID-19 is based upon the following parameters:

1. Those who reported being hospitalized were deemed as "recovered" based upon having no reported adverse outcome reported as of >32 days since their illness onset.
2. Those who reported not being hospitalized were deemed as "recovered" based upon having no reported adverse outcome reported as of >14 days since their illness onset.
3. Those whose hospitalization status was unknown were deemed as "recovered" based upon having no reported adverse outcome reported as of >32 days since their illness onset.

COVID-19 Cases per Day

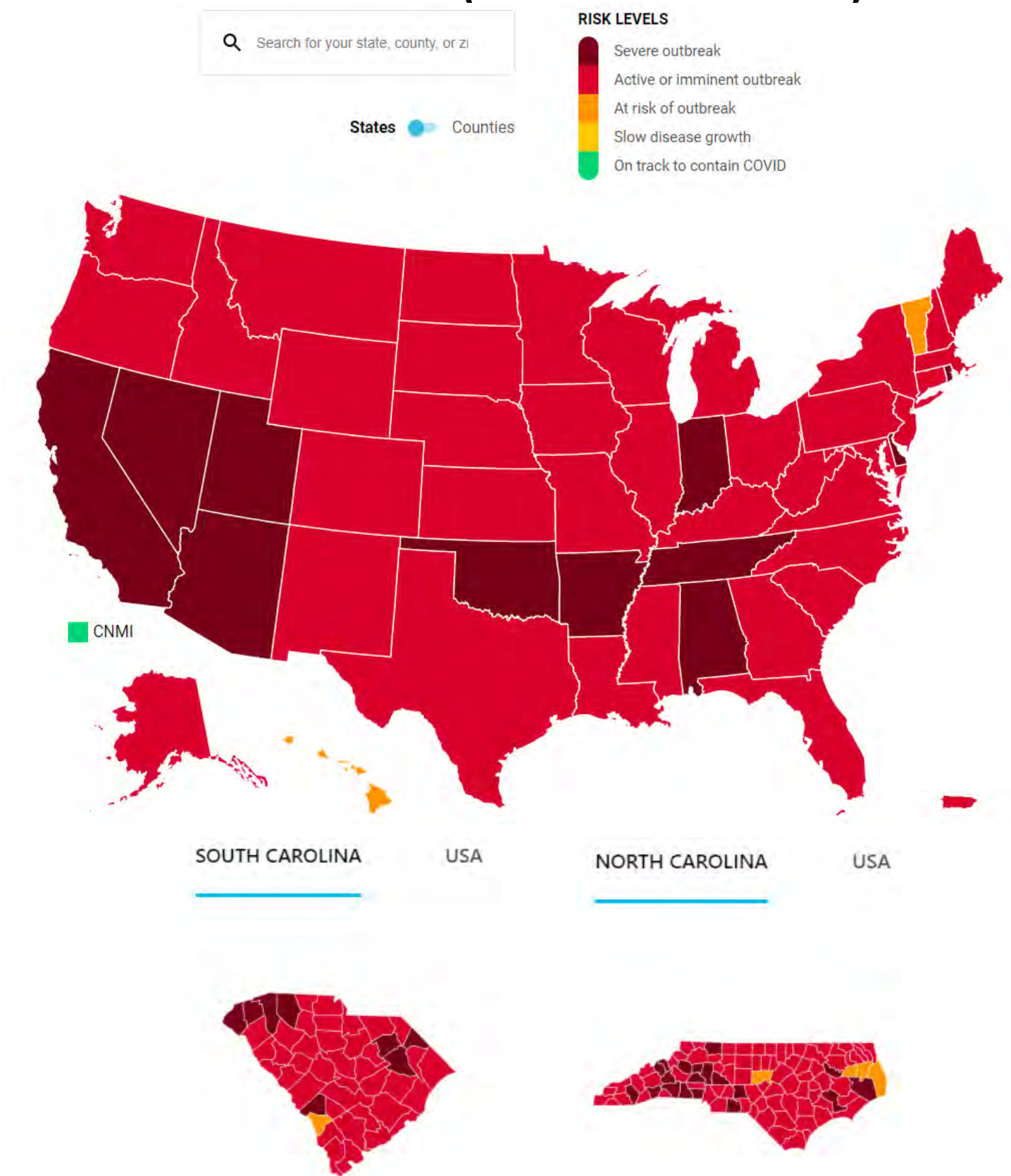
County Displayed: Marlboro



7-Day Moving Average of COVID-19 Cases, by Public Health Region



US Interventions Model (from Covid Act Now)



For more detailed information on a particular state or county, visit www.covidactnow.org.

South Carolina

[SHARE](#)
[RECEIVE ALERTS](#)


COVID RISK LEVEL

Active or imminent outbreak

South Carolina is either actively experiencing an outbreak or is at extreme risk. COVID cases are exponentially growing and/or South Carolina's COVID preparedness is significantly below international standards.



ALERT

South Carolina COVID hospitalizations are at an all-time peak. [See the chart.](#)

DAILY NEW CASES

● **58.8** PER 100K

Dangerous number of new cases

INFECTION RATE

● **1.14**

Active cases are rapidly increasing

POSITIVE TEST RATE

● **15.5%**

Indicates insufficient testing

ICU HEADROOM USED

● **58%**

Can likely handle a new wave of COVID

Beta

TRACERS HIRED

● **5%**

Too many cases and too few tracers hired

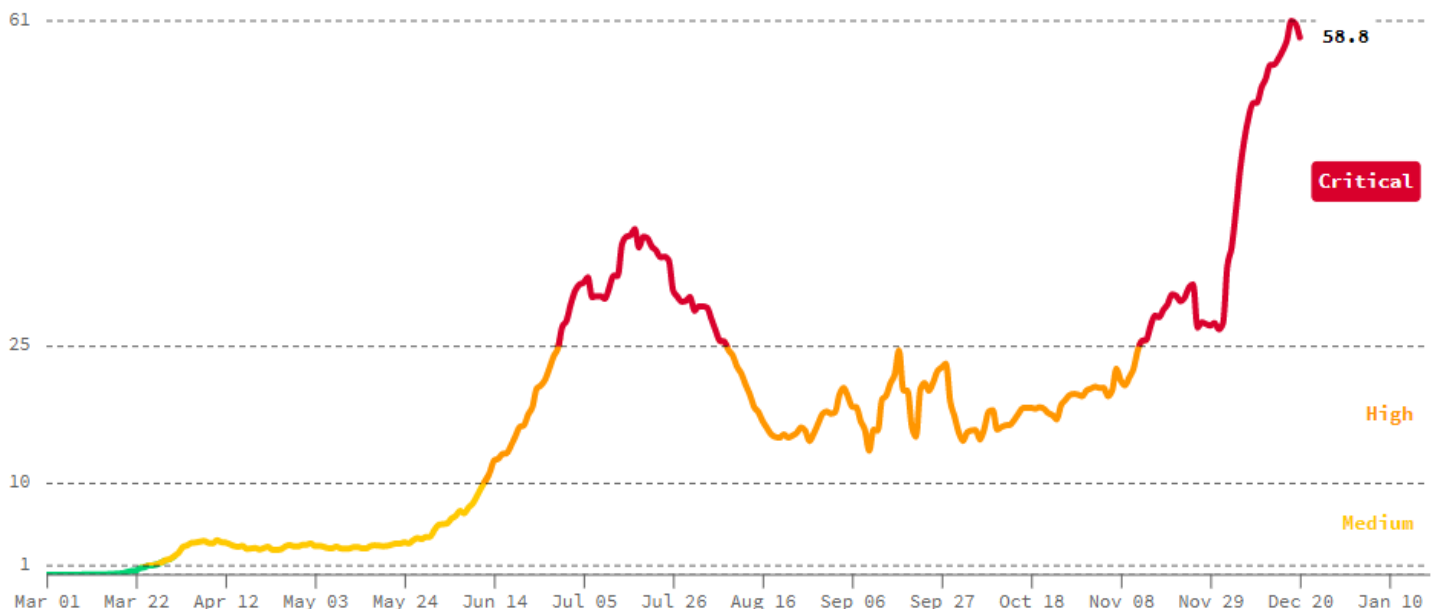
Beta

Daily new cases per 100k population

SOUTH CAROLINA

[Save](#)
[Share](#)

Over the last week, South Carolina has averaged 3,029 new confirmed cases per day (58.8 for every 100,000 residents). If this trend continued for the next year, this would translate to approximately 1,100,000 cases and an [estimated](#) 5,100,000 infections (100% of the population).



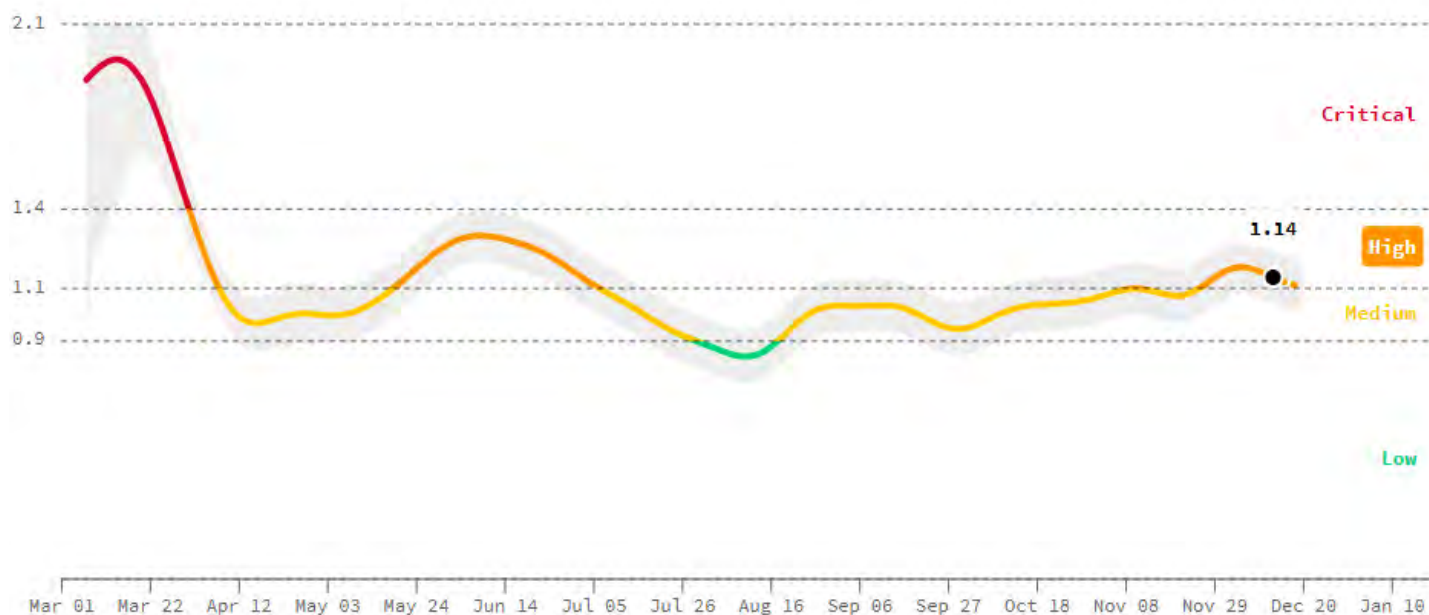
Infection rate

SOUTH CAROLINA

[Save](#)
[Share](#)

On average, each person in South Carolina with COVID is infecting 1.14 other people.

As such, the total number of active cases in South Carolina is growing at an unsustainable rate. If this trend continues, the hospital system may become overloaded. Caution is warranted.

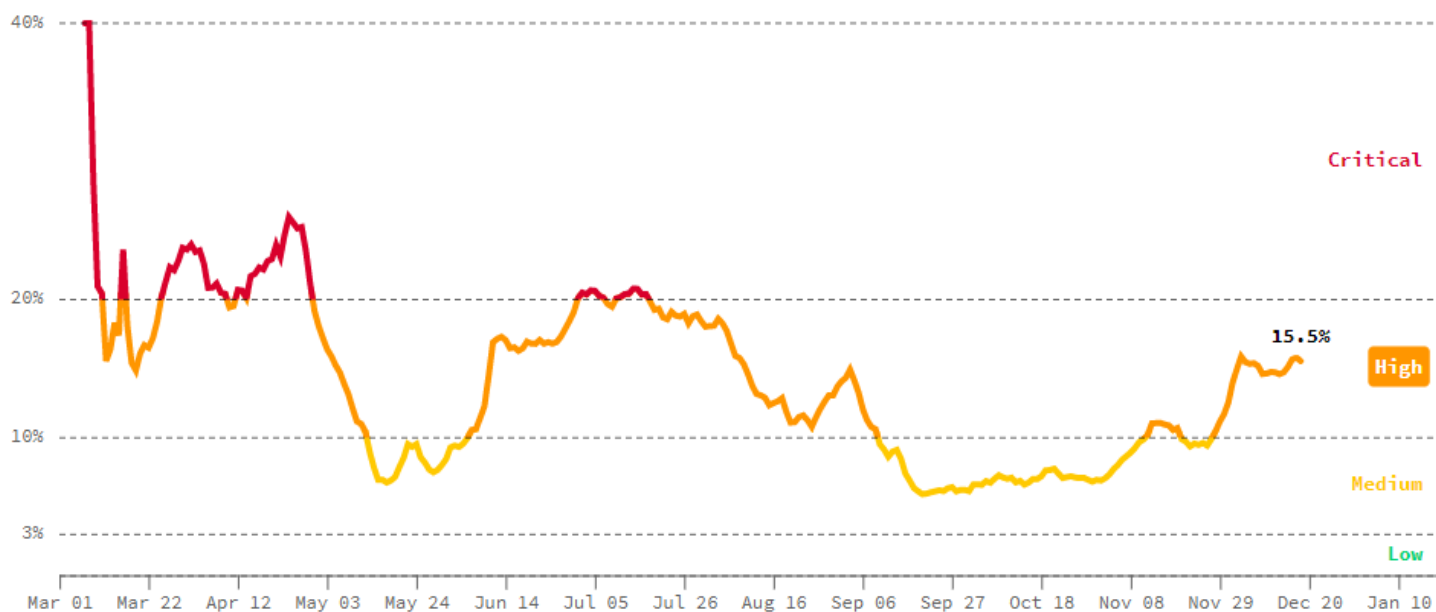


Positive test rate

SOUTH CAROLINA

[Save](#)
[Share](#)

A relatively high percentage (15.5%) of COVID tests were positive, which indicates that testing in South Carolina is limited and that most cases may go undetected. At these levels, it is hard to know how fast COVID is actually spreading, and there is risk of being surprised by a second wave of disease. Caution is warranted.

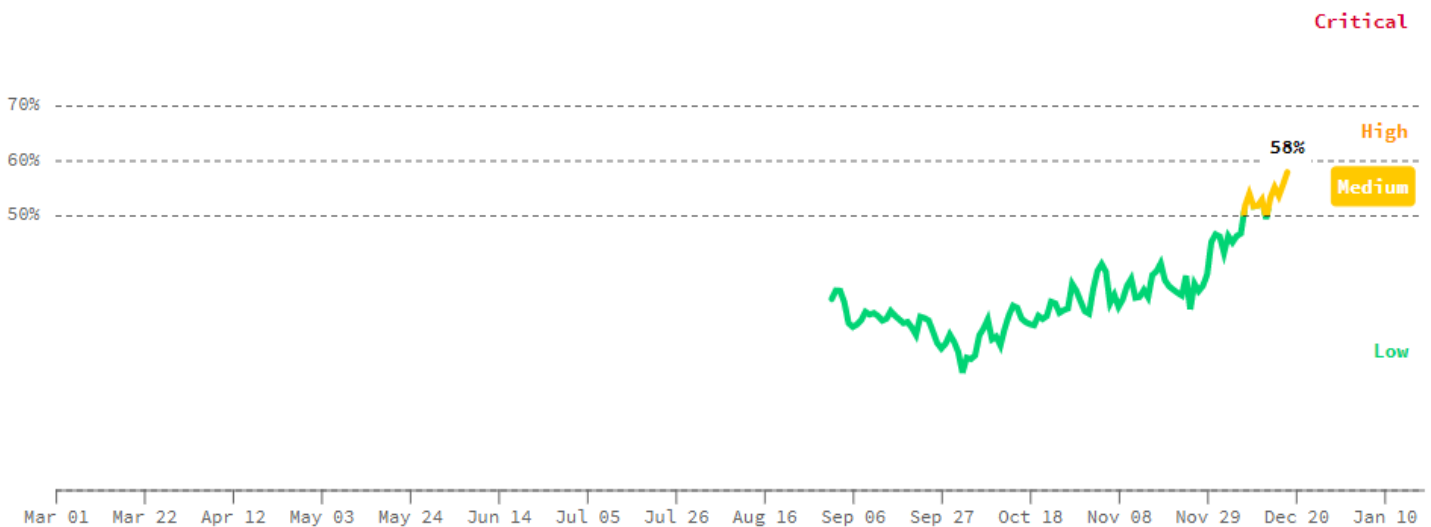


ICU headroom used Beta

SOUTH CAROLINA

[Save](#)
[Share](#)

South Carolina has about 1,269 ICU beds. Based on best available data, 748 are currently occupied by non-COVID patients. Of the 521 ICU beds remaining, 302 are needed by COVID cases, or 58% of available beds. This suggests some ability to absorb an increase in COVID cases.



Tracers hired Beta

SOUTH CAROLINA

[Save](#)
[Share](#)

With 3,029 new daily cases on average, South Carolina needs an estimated 15,145 contact tracers on staff to trace each new case to a known case within 48 hours of detection. Per our best available data, South Carolina has 775 contact tracers, fulfilling only 5% of this staffing requirement. With insufficient contact tracing staff, South Carolina is unlikely to be able to successfully identify and isolate sources of disease spread fast enough to prevent new outbreaks.



Chesterfield County, SC

[SHARE](#)
[RECEIVE ALERTS](#)


COVID RISK LEVEL

Active or imminent outbreak

Chesterfield County is either actively experiencing an outbreak or is at extreme risk. COVID cases are exponentially growing and/or Chesterfield County's COVID preparedness is significantly below international standards.



ALERT

The U.S. is in a third COVID wave. Exercise extra caution in order to reduce your risk of infection, to avoid infecting others, and to avoid overwhelming our healthcare system. [Learn more.](#)

DAILY NEW CASES

● **37.9** PER 100K

Dangerous number of new cases

INFECTION RATE

● **1.04**

COVID is still spreading, but slowly

POSITIVE TEST RATE

● **9.2%**

Indicates adequate testing

ICU HEADROOM USED

● **60%**

At risk to a new wave of COVID

Beta

TRACERS HIRED

● **Unknown**

Insufficient data to assess

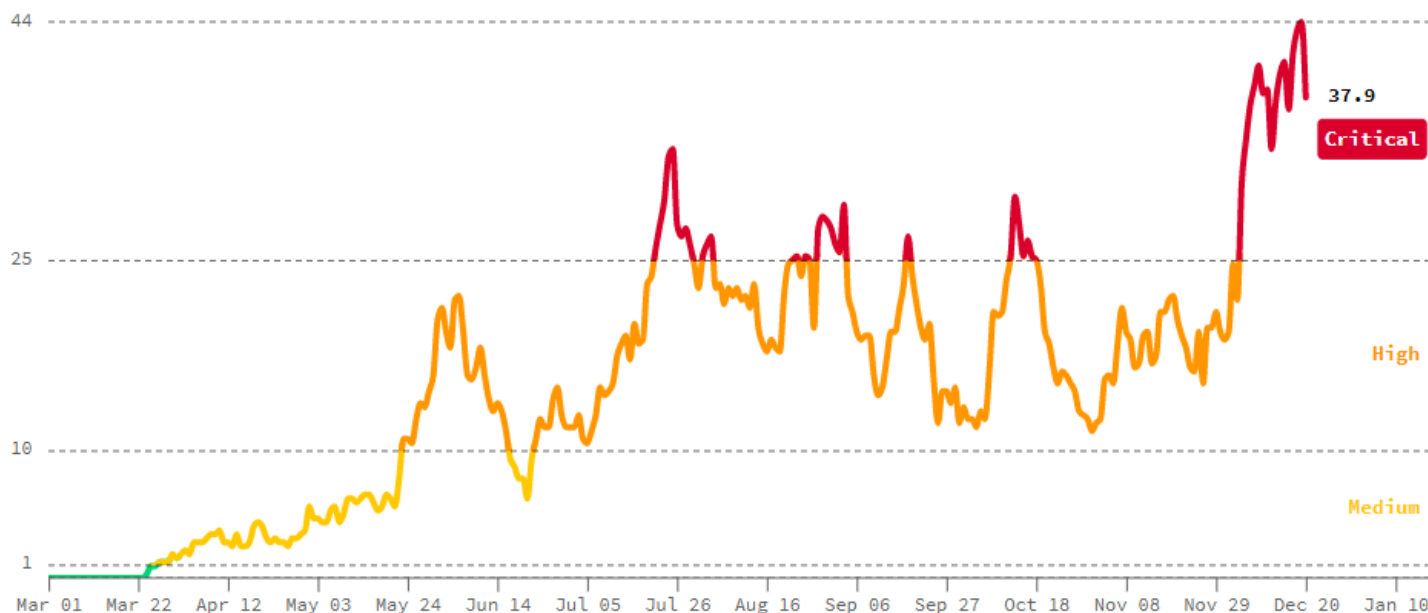
Beta

Daily new cases per 100k population

CHESTERFIELD COUNTY, SOUTH CAROLINA

[Save](#)
[Share](#)

Over the last week, Chesterfield County, South Carolina has averaged 17 new confirmed cases per day (37.9 for every 100,000 residents). If this trend continued for the next year, this would translate to approximately 6,300 cases and an [estimated](#) 32,000 infections (69% of the population).



Darlington County, SC

[SHARE](#)
[RECEIVE ALERTS](#)


COVID RISK LEVEL

Severe outbreak

Darlington County is currently experiencing a severe outbreak. Take all possible precautions to avoid exposure.

ALERT

The U.S. is in a third COVID wave. Exercise extra caution in order to reduce your risk of infection, to avoid infecting others, and to avoid overwhelming our healthcare system. [Learn more.](#)

DAILY NEW CASES

● **88.6** PER 100K

Very dangerous number of new cases

INFECTION RATE

● **1.23**

Active cases are rapidly increasing

POSITIVE TEST RATE

● **14.8%**

Indicates insufficient testing

ICU HEADROOM USED

● **72%**

High risk of hospital overload

Beta

TRACERS HIRED

● **Unknown**

Insufficient data to assess

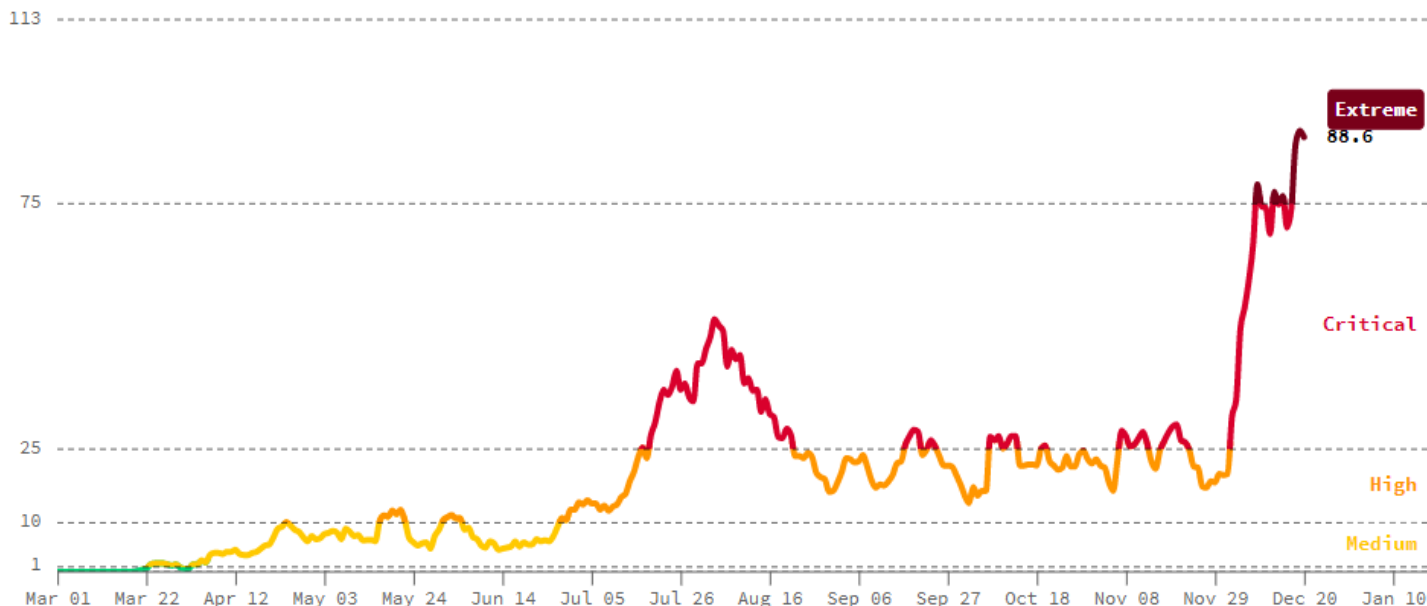
Beta

Daily new cases per 100k population

DARLINGTON COUNTY, SOUTH CAROLINA

[Save](#)
[Share](#)

Over the last week, Darlington County, South Carolina has averaged 59 new confirmed cases per day (88.6 for every 100,000 residents). If this trend continued for the next year, this would translate to approximately 22,000 cases and an [estimated](#) 67,000 infections (100% of the population).



Dillon County, SC

[SHARE](#)
[RECEIVE ALERTS](#)


COVID RISK LEVEL

Severe outbreak

Dillon County is currently experiencing a severe outbreak. Take all possible precautions to avoid exposure.

ALERT

The U.S. is in a third COVID wave. Exercise extra caution in order to reduce your risk of infection, to avoid infecting others, and to avoid overwhelming our healthcare system. [Learn more.](#)

DAILY NEW CASES

● **98.9** PER 100K

Very dangerous number of new cases

INFECTION RATE

● **1.25**

Active cases are rapidly increasing

POSITIVE TEST RATE

● **22.9%**

Indicates dangerously little testing

ICU HEADROOM USED

● **50%**

Can likely handle a new wave of COVID

Beta

TRACERS HIRED

● **Unknown**

Insufficient data to assess

Beta

Daily new cases per 100k population

DILLON COUNTY, SOUTH CAROLINA

[Save](#)
[Share](#)

Over the last week, Dillon County, South Carolina has averaged 30 new confirmed cases per day (**98.9** for every 100,000 residents). If this trend continued for the next year, this would translate to approximately 11,000 cases and an [estimated](#) 30,000 infections (100% of the population).



Lee County, SC

[SHARE](#)
[RECEIVE ALERTS](#)


COVID RISK LEVEL

Active or imminent outbreak

Lee County is either actively experiencing an outbreak or is at extreme risk. COVID cases are exponentially growing and/or Lee County's COVID preparedness is significantly below international standards.

ALERT

The U.S. is in a third COVID wave. Exercise extra caution in order to reduce your risk of infection, to avoid infecting others, and to avoid overwhelming our healthcare system. [Learn more.](#)

DAILY NEW CASES

● **74.7** PER 100K

Dangerous number of new cases

INFECTION RATE

● **1.17**

Active cases are rapidly increasing

POSITIVE TEST RATE

● **15.4%**

Indicates insufficient testing

ICU HEADROOM USED

● **Unknown**

Insufficient data to assess

Beta

TRACERS HIRED

● **Unknown**

Insufficient data to assess

Beta

Daily new cases per 100k population

LEE COUNTY, SOUTH CAROLINA

[Save](#)
[Share](#)

Over the last week, Lee County, South Carolina has averaged 13 new confirmed cases per day (**74.7** for every 100,000 residents). If this trend continued for the next year, this would translate to approximately 4,600 cases and an [estimated](#) 17,000 infections (100% of the population).



Marlboro County, SC

[SHARE](#)
[RECEIVE ALERTS](#)


COVID RISK LEVEL

Active or imminent outbreak

Marlboro County is either actively experiencing an outbreak or is at extreme risk. COVID cases are exponentially growing and/or Marlboro County's COVID preparedness is significantly below international standards.

ALERT

The U.S. is in a third COVID wave. Exercise extra caution in order to reduce your risk of infection, to avoid infecting others, and to avoid overwhelming our healthcare system. [Learn more.](#)

DAILY NEW CASES

● **50.9** PER 100K

Dangerous number of new cases

INFECTION RATE

● **0.89**

Active cases are decreasing

POSITIVE TEST RATE

● **10.6%**

Indicates insufficient testing

ICU HEADROOM USED

● Unknown

Insufficient data to assess

Beta

TRACERS HIRED

● Unknown

Insufficient data to assess

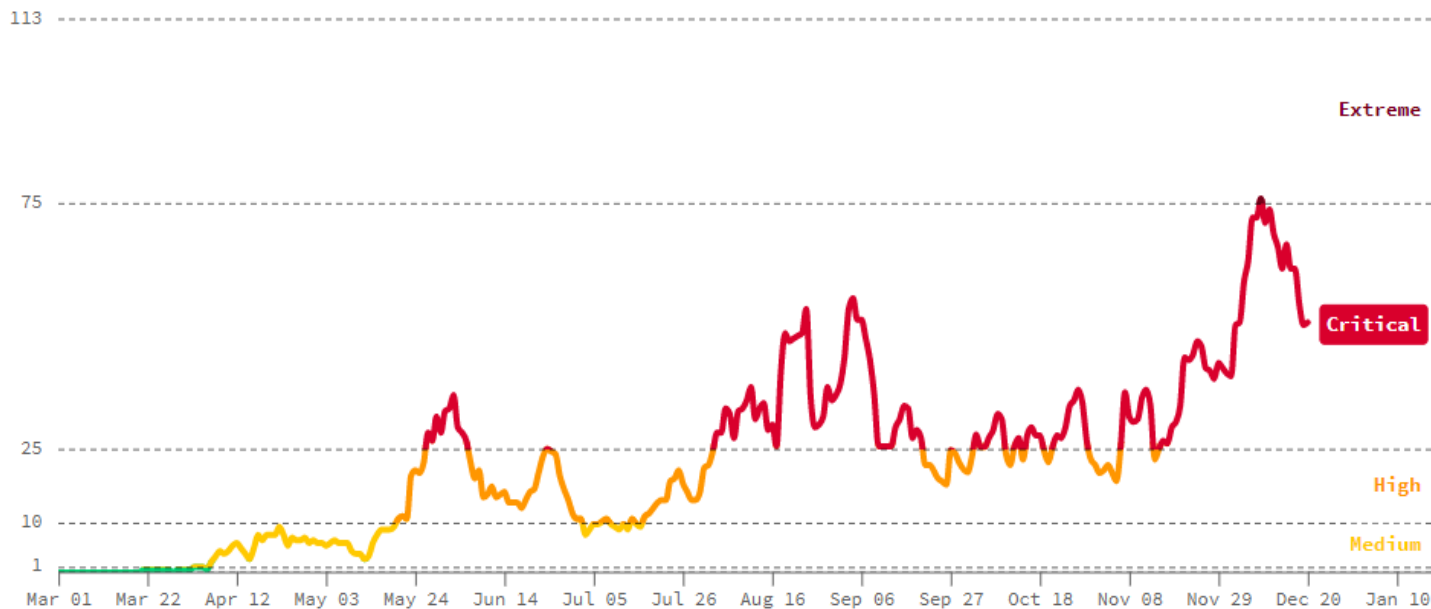
Beta

Daily new cases per 100k population

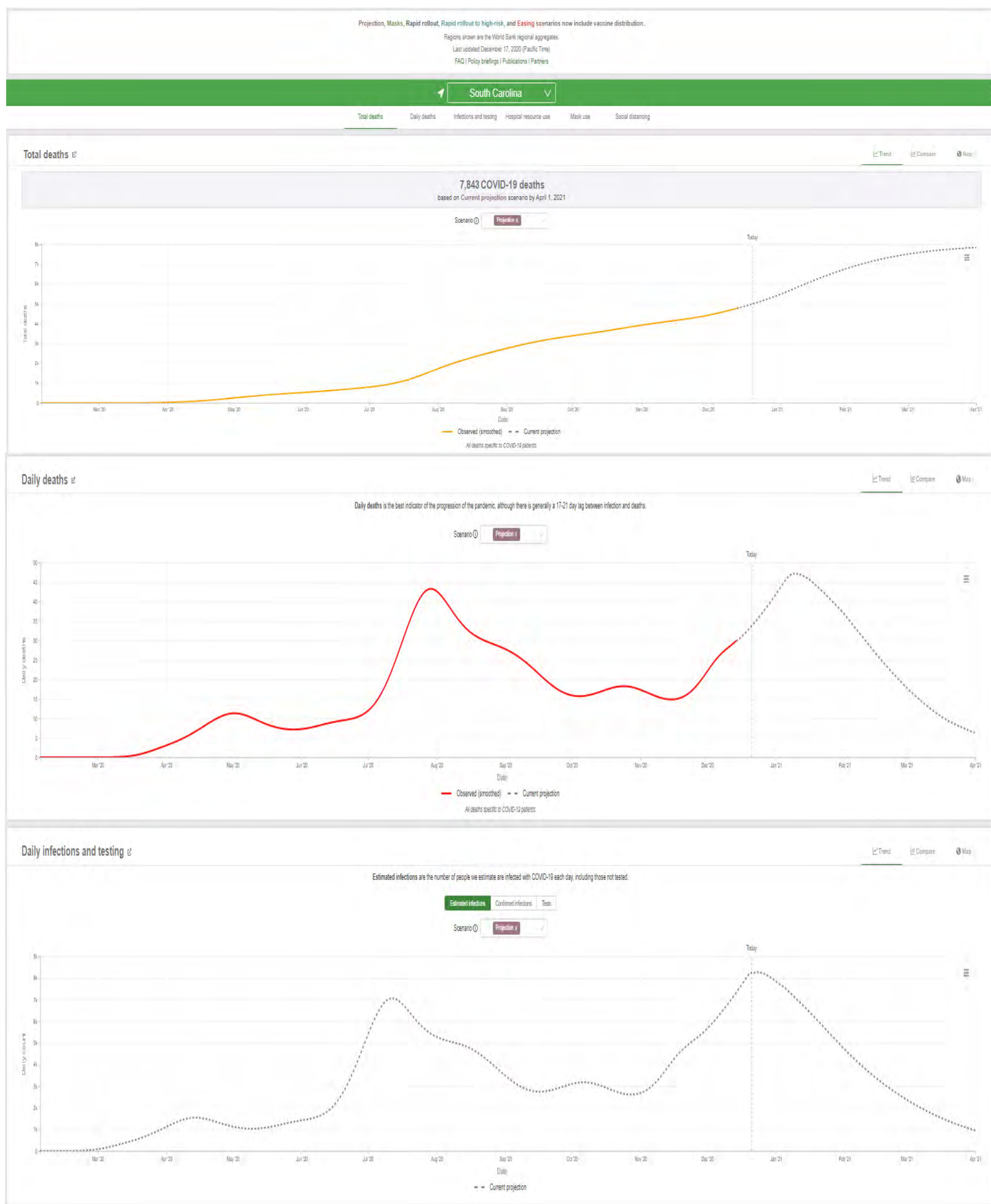
MARLBORO COUNTY, SOUTH CAROLINA

[Save](#)
[Share](#)

Over the last week, Marlboro County, South Carolina has averaged 13 new confirmed cases per day (50.9 for every 100,000 residents). If this trend continued for the next year, this would translate to approximately 4,800 cases and an [estimated](#) 24,000 infections (93% of the population).



IHME Model

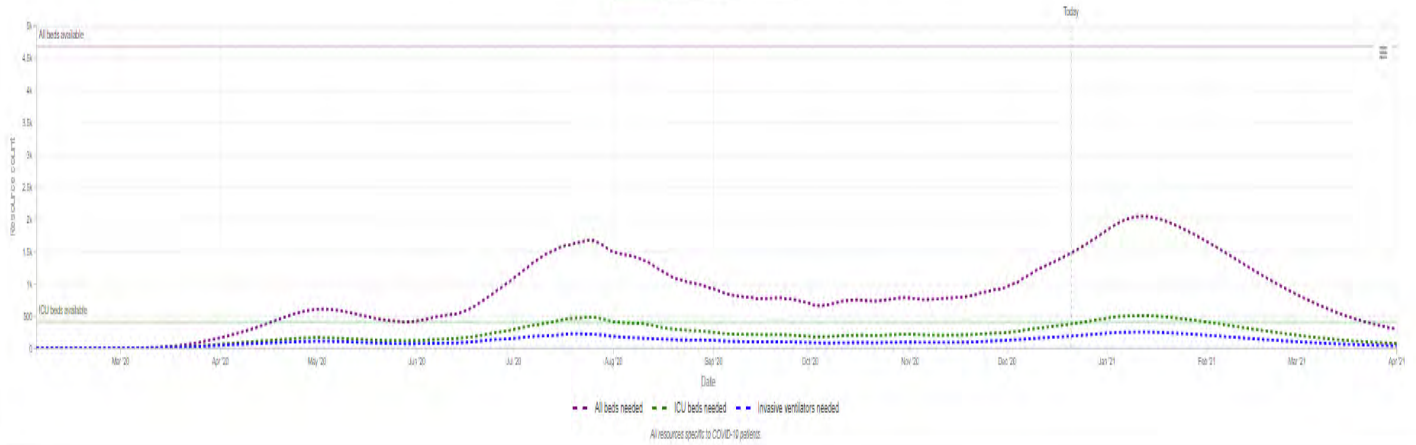


Hospital resource use ¹²

[Trend](#) [Compare](#) [Map](#)

Hospital resource use indicates how equipped a location is to treat COVID-19 patients for the Current projection scenario. Select All beds, ICU beds, or Invasive ventilators for desc...

All resources All beds ICU beds Invasive ventilators

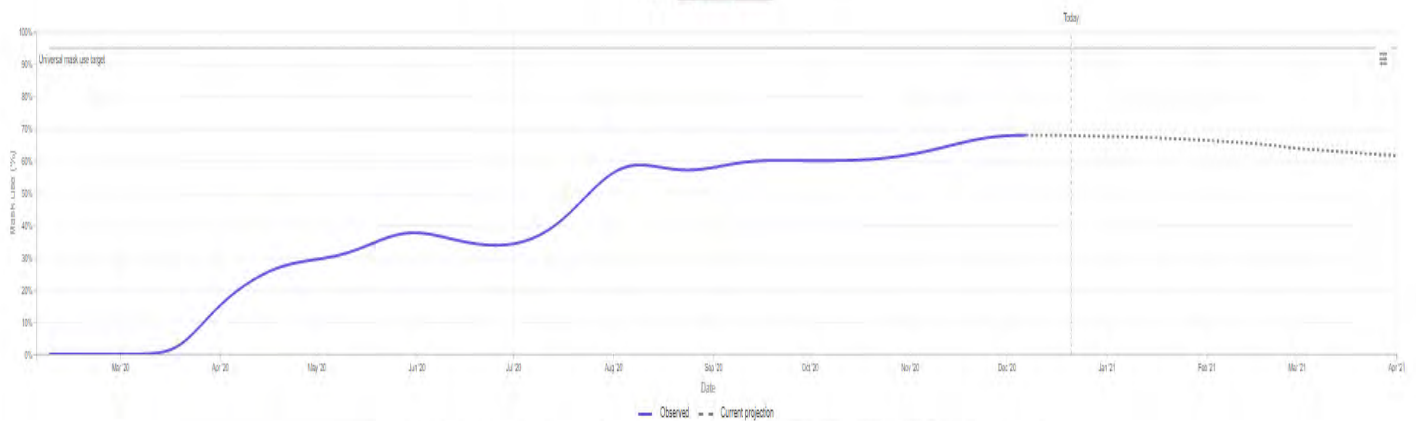


Mask use ¹²

[Trend](#) [Compare](#) [Map](#)

Mask use represents the percentage of the population who say they always wear a mask in public. Mask use can reduce transmission by 30% or more. ¹²

Scenario



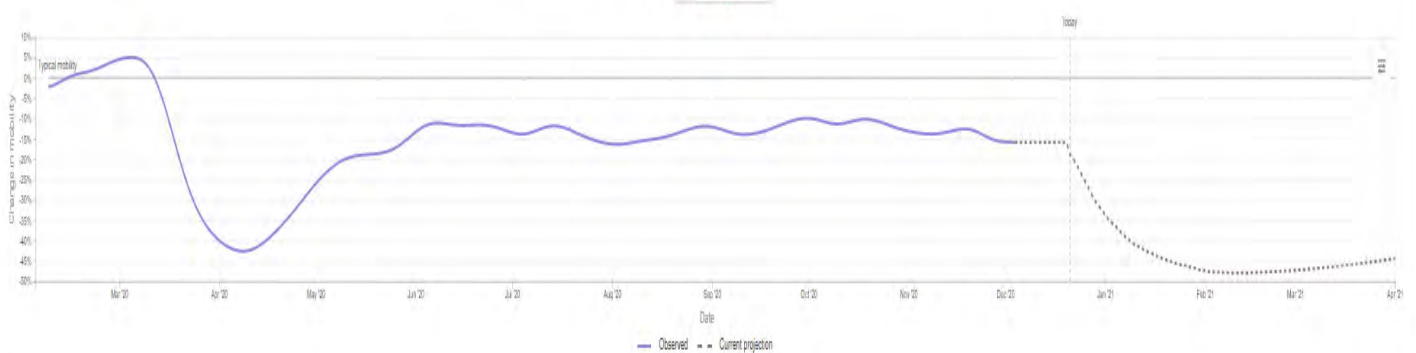
Data sources: PewResearch Center, Facebook Global symptom survey, Facebook US symptom survey (This research is based on survey results from University of Maryland Social Data Science Center / Kaiser Family Foundation; YouGov COVID-19 Behaviour Tracker survey)

Social distancing ¹²

[Trend](#) [Compare](#) [Map](#)

Reducing human contact (as measured by cell phone mobility data) can drive down infections so that mask use, testing, isolation, and contact tracing can work to contain the virus.

Scenario



R_t COVID-19

[Tweet](#) [Share](#)

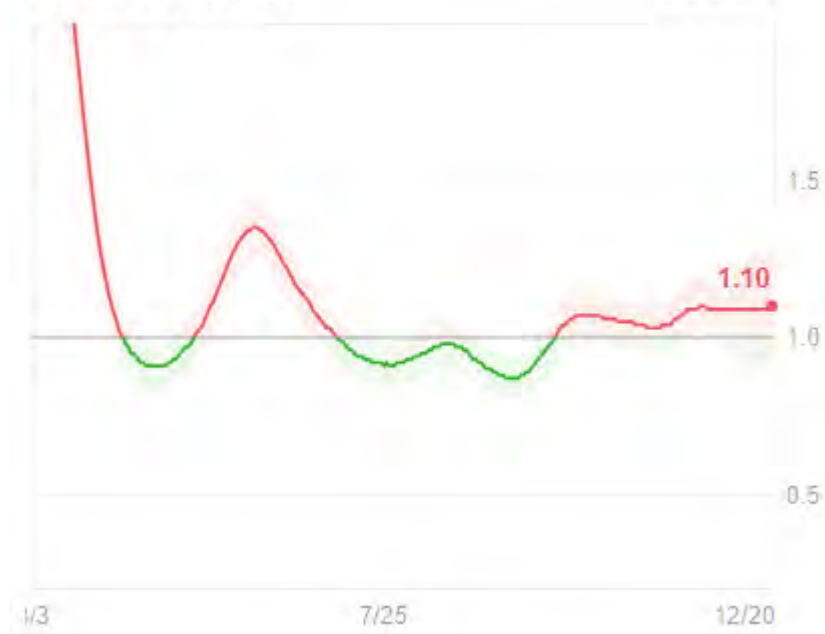
These are up-to-date values for R_t , a key measure of how fast the virus is growing. It's the average number of people who become infected by an infectious person. If R_t is above 1.0, the virus will spread quickly. When R_t is below 1.0, the virus will stop spreading. [Learn More](#).

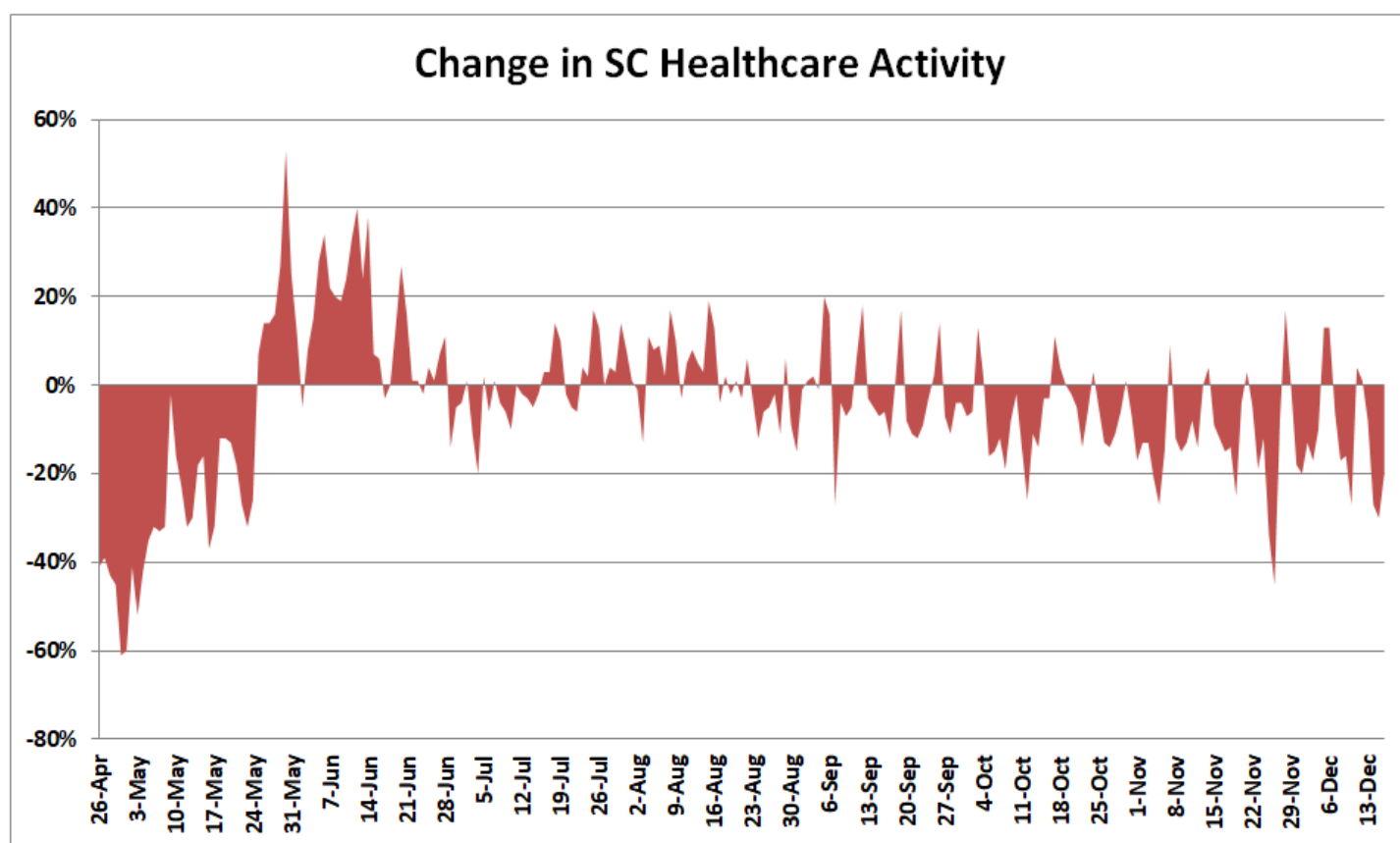
[See details about the spread in South Carolina](#)

Data Last Updated: 12/21 at 11:18AM



South Carolina

[Details >](#)




Resources

CDC: <https://www.cdc.gov/coronavirus/2019-nCoV/index.html>

DHEC: <https://www.dhec.sc.gov/infectious-diseases/viruses/coronavirus-disease-2019-covid-19>

Covid19-Projections Model: <https://covid19-projections.com/>

Covid Act Now: <https://www.covidactnow.org/?s=962191>

Harvard Global Health Institute: <https://globalhealth.harvard.edu/key-metrics-for-covid-suppression-researchers-and-public-health-experts-unite-to-bring-clarity-to-key-metrics-guiding-coronavirus-response/>

IHME Model: <https://covid19.healthdata.org/united-states-of-america?view=total-deaths&tab=trend>

Rt Live: <https://rt.live/>